



Datasheet for ABIN6743713  
**anti-PDIK1L antibody (AA 179-228)**



[Go to Product page](#)

1 Image

Overview

Quantity:	100 µL
Target:	PDIK1L
Binding Specificity:	AA 179-228
Reactivity:	Human, Mouse, Rat, Rabbit, Cow, Dog, Guinea Pig, Horse, Zebrafish (Danio rerio), Pig, Bat, Hamster, Monkey
Host:	Rabbit
Clonality:	Polyclonal
Conjugate:	This PDIK1L antibody is un-conjugated
Application:	Western Blotting (WB)

Product Details

Immunogen:	Synthetic peptide located between aa179-228 of human PDIK1L (Q8N165, NP_690048). Percent identity by BLAST analysis: Human, Chimpanzee, Gorilla, Orangutan, Gibbon, Monkey, Galago, Marmoset, Mouse, Rat, Hamster, Elephant, Dog, Bovine, Bat, Rabbit, Horse, Pig, Opossum, Guinea pig, Platypus (100%), Turkey, Zebra finch, Chicken (92%), Zebrafish (84%).  Type of Immunogen: Synthetic peptide
Specificity:	Human PDIK1L
Predicted Reactivity:	Percent identity by BLAST analysis: Mouse, Rat, Dog, Bovine, Rabbit, Guinea pig (100%) Chicken (92%) Zebrafish (84%).
Purification:	Immunoaffinity purified

## Target Details

---

Target:	PDIK1L
Alternative Name:	PDIK1L ( <a href="#">PDIK1L Products</a> )
Background:	Name/Gene ID: PDIK1L Subfamily: NFK Family: Protein Kinase  Synonyms: PDIK1L, Casein kinase, CLIK1L, Mgc27093, STK35L2
Gene ID:	149420
NCBI Accession:	<a href="#">NP_690048</a>
UniProt:	<a href="#">Q8N165</a>

## Application Details

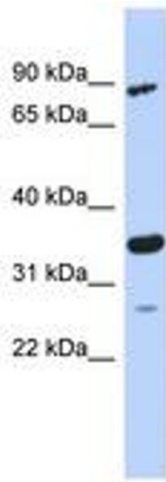
---

Application Notes:	Approved: WB (0.2 - 1 µg/mL)  Usage: Western Blot: Suggested dilution at 1 µg/mL in 5 % skim milk / PBS buffer, and HRP conjugated anti-Rabbit IgG should be diluted in 1: 50,000 - 100,000 as secondary antibody.
Comment:	Target Species of Antibody: Human
Restrictions:	For Research Use only

## Handling

---

Format:	Lyophilized
Reconstitution:	Distilled water
Concentration:	Lot specific
Buffer:	Lyophilized from PBS with 2 % sucrose
Handling Advice:	Avoid repeat freeze-thaw cycles.
Storage:	4 °C,-20 °C
Storage Comment:	Long term: -20°C, the use of 50% glycerol is recommended if storing aliquots in -20°C for long term use (up to 1 year) Short term (less than 1 week): 4°C. Avoid freeze-thaw cycles.



**Image 1.**