



[Go to Product page](#)

Datasheet for ABIN6743715
anti-C22orf25 antibody (N-Term)

1 Image

Overview

Quantity:	100 µL
Target:	C22orf25
Binding Specificity:	N-Term
Reactivity:	Human, Mouse, Rat, Rabbit, Cow, Dog, Pig, Hamster, Monkey, Xenopus laevis, Chicken
Host:	Rabbit
Clonality:	Polyclonal
Conjugate:	This C22orf25 antibody is un-conjugated
Application:	Western Blotting (WB)

Product Details

Immunogen:	Synthetic peptide from N-Terminus of human TANGO2 (Q6ICL3, NP_690870). Percent identity by BLAST analysis: Human, Chimpanzee, Gorilla, Gibbon, Monkey, Galago, Marmoset, Mouse, Rat, Hamster, Panda, Dog, Bovine, Rabbit, Pig, Opossum, Turkey, Chicken, Xenopus (100%), Elephant, Guinea pig, Catfish, Salmon, Stickleback (92%). Type of Immunogen: Synthetic peptide
Specificity:	Human C22orf25
Predicted Reactivity:	Percent identity by BLAST analysis: Human, Dog, Pig (100%) Xenopus (92%).
Purification:	Immunoaffinity purified

Target Details

Target:	C22orf25
Alternative Name:	TANGO2 / C22orf25 (C22orf25 Products)
Background:	Name/Gene ID: TANGO2 Synonyms: TANGO2, C22orf25
Gene ID:	128989
NCBI Accession:	NP_690870
UniProt:	Q6ICL3

Application Details

Application Notes:	Approved: WB (0.2 - 1 µg/mL) Usage: Western Blot: Suggested dilution at 1 µg/mL in 5 % skim milk / PBS buffer, and HRP conjugated anti-Rabbit IgG should be diluted in 1: 50,000 - 100,000 as secondary antibody.
Comment:	Target Species of Antibody: Human
Restrictions:	For Research Use only

Handling

Format:	Lyophilized
Reconstitution:	Distilled water
Concentration:	Lot specific
Buffer:	Lyophilized from PBS with 2 % sucrose
Handling Advice:	Avoid repeat freeze-thaw cycles.
Storage:	4 °C, -20 °C
Storage Comment:	Long term: -20°C, the use of 50% glycerol is recommended if storing aliquots in -20°C for long term use (up to 1 year) Short term (less than 1 week): 4°C. Avoid freeze-thaw cycles.

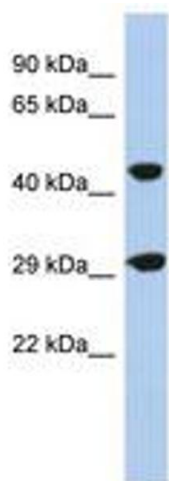


Image 1.