



[Go to Product page](#)

Datasheet for ABIN6743720  
**anti-LACC1 antibody (AA 179-228)**

1 Image

Overview

Quantity:	100 µL
Target:	LACC1 (C13orf31)
Binding Specificity:	AA 179-228
Reactivity:	Human, Mouse, Rat, Dog, Pig, Hamster
Host:	Rabbit
Clonality:	Polyclonal
Conjugate:	This LACC1 antibody is un-conjugated
Application:	Western Blotting (WB)

Product Details

Immunogen:	Synthetic peptide located between aa179-228 of human LACC1 (Q8IV20, NP_694950). Percent identity by BLAST analysis: Human, Chimpanzee, Gorilla, Galago, Mouse, Rat, Hamster, Panda, Dog, Pig (100%), Gibbon, Monkey, Elephant, Bovine, Bat, Rabbit, Guinea pig (92%), Horse, Zebra finch, Platypus (85%).  Type of Immunogen: Synthetic peptide
Specificity:	Human C13orf31
Predicted Reactivity:	Percent identity by BLAST analysis: Human, Mouse, Rat, Dog (100%) Bovine (92%).
Purification:	Immunoaffinity purified

## Target Details

---

Target:	LACC1 (C13orf31)
Alternative Name:	LACC1 ( <a href="#">C13orf31 Products</a> )
Background:	Name/Gene ID: LACC1  Synonyms: LACC1, C13orf31, RP11-5G9.2
Gene ID:	144811
NCBI Accession:	<a href="#">NP_694950</a>
UniProt:	<a href="#">Q8IV20</a>

## Application Details

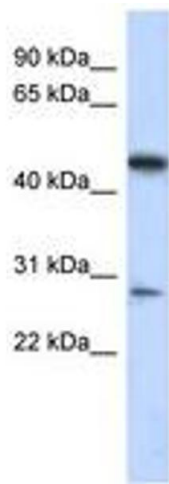
---

Application Notes:	Approved: WB (0.2 - 1 µg/mL)  Usage: Western Blot: Suggested dilution at 1 µg/mL in 5 % skim milk / PBS buffer, and HRP conjugated anti-Rabbit IgG should be diluted in 1: 50,000 - 100,000 as secondary antibody.
Comment:	Target Species of Antibody: Human
Restrictions:	For Research Use only

## Handling

---

Format:	Lyophilized
Reconstitution:	Distilled water
Concentration:	Lot specific
Buffer:	Lyophilized from PBS with 2 % sucrose
Handling Advice:	Avoid repeat freeze-thaw cycles.
Storage:	4 °C, -20 °C
Storage Comment:	Long term: -20°C, the use of 50% glycerol is recommended if storing aliquots in -20°C for long term use (up to 1 year)  Short term (less than 1 week): 4°C. Avoid freeze-thaw cycles.



**Image 1.**