



Datasheet for ABIN6743727
anti-C12orf53 antibody (AA 107-156)



[Go to Product page](#)

1 Image

Overview

Quantity:	100 µL
Target:	C12orf53
Binding Specificity:	AA 107-156
Reactivity:	Human, Mouse, Rat, Cow, Dog, Pig, Rabbit, Guinea Pig, Horse, Bat
Host:	Rabbit
Clonality:	Polyclonal
Conjugate:	This C12orf53 antibody is un-conjugated
Application:	Western Blotting (WB)

Product Details

Immunogen:	Synthetic peptide located between aa107-156 of human PIANP (Q8IYJ0, NP_710152). Percent identity by BLAST analysis: Human, Chimpanzee, Gorilla, Gibbon, Monkey, Galago, Mouse, Rat, Elephant, Panda, Dog, Bovine, Bat, Rabbit, Horse, Pig, Opossum, Guinea pig, Platypus (100%), Marmoset (92%), Turkey, Chicken (85%). Type of Immunogen: Synthetic peptide
Specificity:	Human C12orf53
Predicted Reactivity:	Percent identity by BLAST analysis: Human, Dog, Guinea pig (100%) Chicken (85%).
Purification:	Immunoaffinity purified

Target Details

Target:	C12orf53
Alternative Name:	C12orf53 (C12orf53 Products)
Background:	Name/Gene ID: PIANP Synonyms: PIANP, C12orf53, Leda-1, PANP
Gene ID:	196500
NCBI Accession:	NP_710152
UniProt:	Q8IYJ0

Application Details

Application Notes:	Approved: WB (0.2 - 1 µg/mL) Usage: Western Blot: Suggested dilution at 1 µg/mL in 5 % skim milk / PBS buffer, and HRP conjugated anti-Rabbit IgG should be diluted in 1: 50,000 - 100,000 as secondary antibody.
Comment:	Target Species of Antibody: Human
Restrictions:	For Research Use only

Handling

Format:	Lyophilized
Reconstitution:	Distilled water
Concentration:	Lot specific
Buffer:	Lyophilized from PBS with 2 % sucrose
Handling Advice:	Avoid repeat freeze-thaw cycles.
Storage:	4 °C, -20 °C
Storage Comment:	Long term: -20°C, the use of 50% glycerol is recommended if storing aliquots in -20°C for long term use (up to 1 year) Short term (less than 1 week): 4°C. Avoid freeze-thaw cycles.

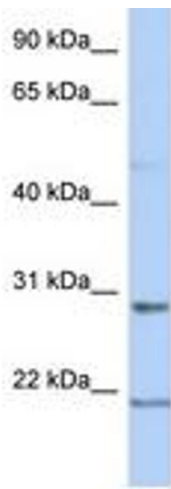


Image 1.