

Datasheet for ABIN6743733 anti-SH2D3C antibody (AA 179-228)



[Go to Product page](#)

1 Image

Overview

Quantity:	100 µL
Target:	SH2D3C
Binding Specificity:	AA 179-228
Reactivity:	Human, Mouse, Rat, Rabbit, Cow, Dog, Guinea Pig, Zebrafish (Danio rerio), Monkey, Bat, Pig, Chicken, Xenopus laevis
Host:	Rabbit
Clonality:	Polyclonal
Conjugate:	This SH2D3C antibody is un-conjugated
Application:	Western Blotting (WB)

Product Details

Immunogen:	<p>Synthetic peptide located between aa179-228 of human SH2D3C (Q8N5H7-2, NP_733745).</p> <p>Percent identity by BLAST analysis: Human, Gorilla, Gibbon, Monkey, Galago, Marmoset, Mouse, Rat, Elephant, Dog, Bovine, Bat, Rabbit, Pig, Opossum, Guinea pig, Turkey, Zebra finch, Chicken, Platypus, Xenopus (100%), Horse, Lizard (92%).</p> <p>Type of Immunogen: Synthetic peptide</p>
Specificity:	Human SH2D3C
Predicted Reactivity:	Percent identity by BLAST analysis: Human, Mouse, Rat, Dog, Bovine, Rabbit, Pig, Guinea pig, Chicken, Xenopus (100%) Horse (92%).
Purification:	Immunoaffinity purified

Target Details

Target:	SH2D3C
Alternative Name:	SH2D3C / NSP3 (SH2D3C Products)
Background:	Name/Gene ID: SH2D3C Synonyms: SH2D3C, Novel SH2-containing protein 3, PRO34088, SH2 domain-containing 3C, NSP3, SH2 domain containing 3C
Gene ID:	10044
NCBI Accession:	NP_733745
UniProt:	Q8N5H7

Application Details

Application Notes:	Approved: WB (0.2 - 1 µg/mL) Usage: Western Blot: Suggested dilution at 1 µg/mL in 5 % skim milk / PBS buffer, and HRP conjugated anti-Rabbit IgG should be diluted in 1: 50,000 - 100,000 as secondary antibody.
Comment:	Target Species of Antibody: Human
Restrictions:	For Research Use only

Handling

Format:	Lyophilized
Reconstitution:	Distilled water
Concentration:	Lot specific
Buffer:	Lyophilized from PBS with 2 % sucrose
Handling Advice:	Avoid repeat freeze-thaw cycles.
Storage:	4 °C, -20 °C
Storage Comment:	Long term: -20°C, the use of 50% glycerol is recommended if storing aliquots in -20°C for long term use (up to 1 year) Short term (less than 1 week): 4°C. Avoid freeze-thaw cycles.

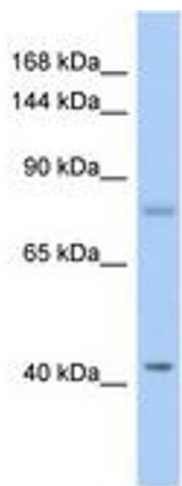


Image 1.