



[Go to Product page](#)

Datasheet for ABIN6743735
anti-C3orf24 antibody (AA 71-120)

1 Image

Overview

Quantity:	100 µL
Target:	C3orf24
Binding Specificity:	AA 71-120
Reactivity:	Human, Rat, Mouse, Guinea Pig, Horse, Rabbit, Cow, Dog, Bat, Pig, Hamster, Monkey
Host:	Rabbit
Clonality:	Polyclonal
Conjugate:	This C3orf24 antibody is un-conjugated
Application:	Western Blotting (WB)

Product Details

Immunogen:	Synthetic peptide located between aa71-120 of human FANCD2OS (Q96PS1, NP_775743). Percent identity by BLAST analysis: Human, Chimpanzee, Gibbon, Monkey, Galago, Marmoset, Mouse, Rat, Hamster, Panda, Dog, Bovine, Bat, Rabbit, Horse, Pig, Guinea pig, Platypus (100%), Elephant, Opossum (92%). Type of Immunogen: Synthetic peptide
Specificity:	Human C3orf24
Predicted Reactivity:	Percent identity by BLAST analysis: Dog, Pig (100%).
Purification:	Immunoaffinity purified

Target Details

Target:	C3orf24
Alternative Name:	FANCD2OS (C3orf24 Products)
Background:	Name/Gene ID: FANCD2OS Synonyms: FANCD2OS, C3orf24, Fancd2os, FANCD2 opposite strand
Gene ID:	115795
NCBI Accession:	NP_775743
UniProt:	Q96PS1

Application Details

Application Notes:	Approved: WB (0.2 - 1 µg/mL) Usage: Western Blot: Suggested dilution at 1 µg/mL in 5 % skim milk / PBS buffer, and HRP conjugated anti-Rabbit IgG should be diluted in 1: 50,000 - 100,000 as secondary antibody.
Comment:	Target Species of Antibody: Human
Restrictions:	For Research Use only

Handling

Format:	Lyophilized
Reconstitution:	Distilled water
Concentration:	Lot specific
Buffer:	Lyophilized from PBS with 2 % sucrose
Handling Advice:	Avoid repeat freeze-thaw cycles.
Storage:	4 °C, -20 °C
Storage Comment:	Long term: -20°C, the use of 50% glycerol is recommended if storing aliquots in -20°C for long term use (up to 1 year) Short term (less than 1 week): 4°C. Avoid freeze-thaw cycles.

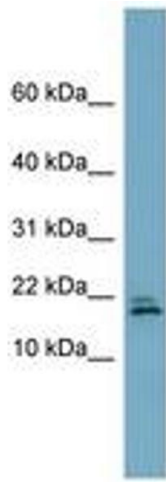


Image 1.