



[Go to Product page](#)

Datasheet for ABIN6743740
anti-SYT9 antibody (AA 179-228)

1 Image

Overview

Quantity:	100 µL
Target:	SYT9
Binding Specificity:	AA 179-228
Reactivity:	Human, Mouse, Rat, Rabbit, Cow, Guinea Pig, Horse
Host:	Rabbit
Clonality:	Polyclonal
Conjugate:	This SYT9 antibody is un-conjugated
Application:	Western Blotting (WB)

Product Details

Immunogen:	Synthetic peptide located between aa179-228 of human SYT9 (Q86SS6, NP_783860). Percent identity by BLAST analysis: Human, Chimpanzee, Gorilla, Gibbon, Galago, Marmoset, Mouse, Rat, Bovine, Rabbit, Horse (100%), Monkey, Elephant, Bat, Pig, Zebra finch (92%), Guinea pig, Turkey, Chicken (85%). Type of Immunogen: Synthetic peptide
Specificity:	Human SYT9
Predicted Reactivity:	Percent identity by BLAST analysis: Human, Mouse, Rat, Bovine, Rabbit, Horse (100%) Pig (92%) Guinea pig, Chicken (85%).
Purification:	Immunoaffinity purified

Target Details

Target: SYT9

Alternative Name: SYT9 / Synaptotagmin 9 ([SYT9 Products](#))

Background: Name/Gene ID: SYT9

Synonyms: SYT9, Synaptotagmin IX, Synaptotagmin-9, SytIX

Gene ID: 143425

NCBI Accession: [NP_783860](#)

UniProt: [Q86SS6](#)

Application Details

Application Notes: Approved: WB (0.2 - 1 µg/mL)

Usage: Western Blot: Suggested dilution at 1 µg/mL in 5 % skim milk / PBS buffer, and HRP conjugated anti-Rabbit IgG should be diluted in 1: 50,000 - 100,000 as secondary antibody.

Comment: Target Species of Antibody: Human

Restrictions: For Research Use only

Handling

Format: Lyophilized

Reconstitution: Distilled water

Concentration: Lot specific

Buffer: Lyophilized from PBS with 2 % sucrose

Handling Advice: Avoid repeat freeze-thaw cycles.

Storage: 4 °C, -20 °C

Storage Comment: Long term: -20°C, the use of 50% glycerol is recommended if storing aliquots in -20°C for long term use (up to 1 year)

Short term (less than 1 week): 4°C. Avoid freeze-thaw cycles.

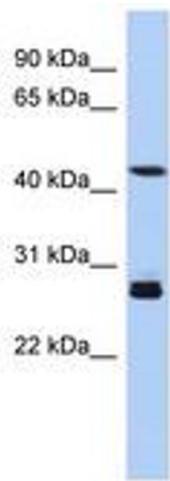


Image 1.