



[Go to Product page](#)

Datasheet for ABIN6743747
anti-DGKA antibody (AA 107-156)

1 Image

Overview

Quantity:	100 µL
Target:	DGKA
Binding Specificity:	AA 107-156
Reactivity:	Human, Rat, Mouse, Dog, Pig, Cow, Horse
Host:	Rabbit
Clonality:	Polyclonal
Conjugate:	This DGKA antibody is un-conjugated
Application:	Western Blotting (WB)

Product Details

Immunogen:	Synthetic peptide located between aa107-156 of human DGKA (P23743, NP_963848). Percent identity by BLAST analysis: Human, Chimpanzee, Gorilla, Orangutan, Gibbon, Monkey, Elephant, Dog, Bovine, Horse, Pig (100%), Galago, Marmoset, Bat, Rabbit, Guinea pig (92%), Hamster (91%), Mouse, Rat (84%). Type of Immunogen: Synthetic peptide
Specificity:	Human DGKA
Predicted Reactivity:	Percent identity by BLAST analysis: Human, Dog, Bovine, Pig (100%) Rabbit, Guinea pig (92%) Mouse, Rat (84%).
Purification:	Immunoaffinity purified

Target Details

Target:	DGKA
Alternative Name:	DGKA (DGKA Products)
Background:	Name/Gene ID: DGKA Subfamily: Diacylglycerol kinase Family: Non-protein Kinase Synonyms: DGKA, 80 kDa diacylglycerol kinase, DAG kinase alpha, Diglyceride kinase alpha, DGK-alpha, Diacylglycerol kinase alpha, Diacylglycerol kinase, alpha, DAGK1, DAGK
Gene ID:	1606
NCBI Accession:	NP_963848
UniProt:	P23743

Application Details

Application Notes:	Approved: WB (0.2 - 1 µg/mL) Usage: Western Blot: Suggested dilution at 1 µg/mL in 5 % skim milk / PBS buffer, and HRP conjugated anti-Rabbit IgG should be diluted in 1: 50,000 - 100,000 as secondary antibody.
Comment:	Target Species of Antibody: Human
Restrictions:	For Research Use only

Handling

Format:	Lyophilized
Reconstitution:	Distilled water
Concentration:	Lot specific
Buffer:	Lyophilized from PBS with 2 % sucrose
Handling Advice:	Avoid repeat freeze-thaw cycles.
Storage:	4 °C, -20 °C
Storage Comment:	Long term: -20°C, the use of 50% glycerol is recommended if storing aliquots in -20°C for long term use (up to 1 year) Short term (less than 1 week): 4°C. Avoid freeze-thaw cycles.

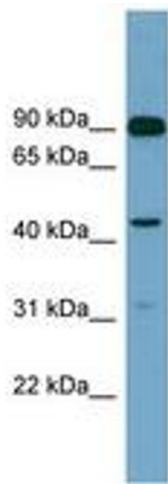


Image 1.