



[Go to Product page](#)

Datasheet for ABIN6743750  
**anti-ZSWIM3 antibody (AA 35-84)**

1 Image

Overview

Quantity:	100 µL
Target:	ZSWIM3
Binding Specificity:	AA 35-84
Reactivity:	Human, Mouse, Rat, Horse, Pig, Bat
Host:	Rabbit
Clonality:	Polyclonal
Conjugate:	This ZSWIM3 antibody is un-conjugated
Application:	Western Blotting (WB)

Product Details

Immunogen:	Synthetic peptide located between aa35-84 of human ZSWIM3 (Q96MP5, NP_542790). Percent identity by BLAST analysis: Human, Chimpanzee, Gorilla, Gibbon, Monkey, Galago, Panda, Bat, Horse, Pig (100%), Marmoset, Hamster, Elephant, Dog, Rabbit, Opossum, Guinea pig (92%), Mouse, Rat (85%).  Type of Immunogen: Synthetic peptide
Specificity:	Human ZSWIM3
Predicted Reactivity:	Percent identity by BLAST analysis: Horse, Pig (100%) Dog, Rabbit (92%) Mouse, Rat (85%).
Purification:	Immunoaffinity purified

## Target Details

---

Target: ZSWIM3

Alternative Name: ZSWIM3 ([ZSWIM3 Products](#))

Background: Name/Gene ID: ZSWIM3

Synonyms: ZSWIM3, C20orf164, DJ337018.7

Gene ID: 140831

NCBI Accession: [NP\\_542790](#)

UniProt: [Q96MP5](#)

## Application Details

---

Application Notes: Approved: WB (0.2 - 1 µg/mL)

Usage: Western Blot: Suggested dilution at 1 µg/mL in 5 % skim milk / PBS buffer, and HRP conjugated anti-Rabbit IgG should be diluted in 1: 50,000 - 100,000 as secondary antibody.

Comment: Target Species of Antibody: Human

Restrictions: For Research Use only

## Handling

---

Format: Lyophilized

Reconstitution: Distilled water

Concentration: Lot specific

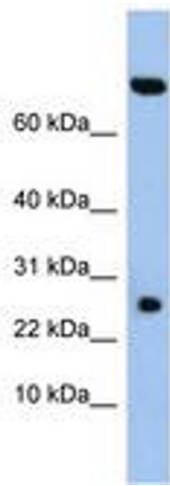
Buffer: Lyophilized from PBS with 2 % sucrose

Handling Advice: Avoid repeat freeze-thaw cycles.

Storage: 4 °C, -20 °C

Storage Comment: Long term: -20°C, the use of 50% glycerol is recommended if storing aliquots in -20°C for long term use (up to 1 year)

Short term (less than 1 week): 4°C. Avoid freeze-thaw cycles.



**Image 1.**