



[Go to Product page](#)

Datasheet for ABIN6743756
anti-Actl7b antibody (AA 287-336)

1 Image

Overview

Quantity:	100 µL
Target:	Actl7b
Binding Specificity:	AA 287-336
Reactivity:	Human, Mouse, Monkey
Host:	Rabbit
Clonality:	Polyclonal
Conjugate:	This Actl7b antibody is un-conjugated
Application:	Western Blotting (WB)

Product Details

Immunogen:	Synthetic peptide located between aa287-336 of human ACTL7B (Q9Y614, NP_006677). Percent identity by BLAST analysis: Human, Chimpanzee, Gorilla, Gibbon, Monkey (100%), Rat (92%), Mouse (84%). Type of Immunogen: Synthetic peptide
Specificity:	Human ACTL7B
Predicted Reactivity:	Percent identity by BLAST analysis: Human, Monkey (100%) Rat (92%) Mouse (84%).
Purification:	Immunoaffinity purified

Target Details

Target:	Actl7b
---------	--------

Target Details

Alternative Name:	ACTL7B (Actl7b Products)
Background:	Name/Gene ID: ACTL7B Synonyms: ACTL7B, Actin-like protein 7B, Actin-like-7-beta, Actin-like 7-beta, Actin-like 7B, Tact1
Gene ID:	10880
NCBI Accession:	NP_006677
UniProt:	Q9Y614

Application Details

Application Notes:	Approved: WB (0.2 - 1 µg/mL) Usage: Western Blot: Suggested dilution at 1 µg/mL in 5 % skim milk / PBS buffer, and HRP conjugated anti-Rabbit IgG should be diluted in 1: 50,000 - 100,000 as secondary antibody.
Comment:	Target Species of Antibody: Human
Restrictions:	For Research Use only

Handling

Format:	Lyophilized
Reconstitution:	Distilled water
Concentration:	Lot specific
Buffer:	Lyophilized from PBS with 2 % sucrose
Handling Advice:	Avoid repeat freeze-thaw cycles.
Storage:	4 °C,-20 °C
Storage Comment:	Long term: -20°C, the use of 50% glycerol is recommended if storing aliquots in -20°C for long term use (up to 1 year) Short term (less than 1 week): 4°C. Avoid freeze-thaw cycles.

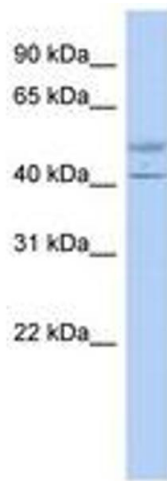


Image 1.