



[Go to Product page](#)

Datasheet for ABIN6743763  
**anti-LDHAL6B antibody (AA 251-300)**

1 Image

Overview

Quantity:	100 µL
Target:	LDHAL6B
Binding Specificity:	AA 251-300
Reactivity:	Human, Rat, Rabbit
Host:	Rabbit
Clonality:	Polyclonal
Conjugate:	This LDHAL6B antibody is un-conjugated
Application:	Western Blotting (WB)

Product Details

Immunogen:	Synthetic peptide located between aa251-300 of human LDHAL6B (Q9BYZ2, NP_149972). Percent identity by BLAST analysis: Human (100%), Gorilla, Gibbon (92%), Monkey, Marmoset (85%), Elephant (84%), Rat (76%).  Type of Immunogen: Synthetic peptide
Specificity:	Human LDHAL6B
Predicted Reactivity:	Percent identity by BLAST analysis:
Purification:	Immunoaffinity purified

Target Details

Target:	LDHAL6B
---------	---------

## Target Details

---

Alternative Name:	LDHAL6B ( <a href="#">LDHAL6B Products</a> )
Background:	Name/Gene ID: LDHAL6B  Synonyms: LDHAL6B, Lactate dehydrogenase A-like 6, LDH6B, LDHAL6, LDHL
Gene ID:	92483
NCBI Accession:	<a href="#">NP_149972</a>
UniProt:	<a href="#">Q9BYZ2</a>

## Application Details

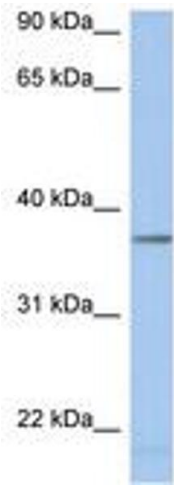
---

Application Notes:	Approved: WB (0.2 - 1 µg/mL)  Usage: Western Blot: Suggested dilution at 1 µg/mL in 5 % skim milk / PBS buffer, and HRP conjugated anti-Rabbit IgG should be diluted in 1: 50,000 - 100,000 as secondary antibody.
Comment:	Target Species of Antibody: Human
Restrictions:	For Research Use only

## Handling

---

Format:	Lyophilized
Reconstitution:	Distilled water
Concentration:	Lot specific
Buffer:	Lyophilized from PBS with 2 % sucrose
Handling Advice:	Avoid repeat freeze-thaw cycles.
Storage:	4 °C,-20 °C
Storage Comment:	Long term: -20°C, the use of 50% glycerol is recommended if storing aliquots in -20°C for long term use (up to 1 year)  Short term (less than 1 week): 4°C. Avoid freeze-thaw cycles.



**Image 1.**