



[Go to Product page](#)

Datasheet for ABIN6743780
anti-C1orf43 antibody (AA 179-228)

1 Image

Overview

Quantity:	100 µL
Target:	C1orf43
Binding Specificity:	AA 179-228
Reactivity:	Human, Monkey
Host:	Rabbit
Clonality:	Polyclonal
Conjugate:	This C1orf43 antibody is un-conjugated
Application:	Western Blotting (WB)

Product Details

Immunogen:	Synthetic peptide located between aa179-228 of human C1orf43 (Q9BWL3, NP_001092086). Percent identity by BLAST analysis: Human, Chimpanzee, Gorilla, Gibbon, Monkey, Marmoset, Elephant, Smelt (100%), Mouse, Rat, Panda, Dog, Bovine, Rabbit, Horse, Pig, Opossum, Guinea pig, Turkey, Chicken (92%), Zebra finch (84%). Type of Immunogen: Synthetic peptide
Specificity:	Human C1orf43
Predicted Reactivity:	Percent identity by BLAST analysis: Human (100%) Dog (92%).
Purification:	Immunoaffinity purified

Target Details

Target:	C1orf43
Alternative Name:	C1orf43 (C1orf43 Products)
Background:	Name/Gene ID: C1orf43 Synonyms: C1orf43, HSPC012, NICE-3, NICE3, Protein NICE-3, NS5ATP4, S863-3
Gene ID:	25912
NCBI Accession:	NP_001092086
UniProt:	Q9BWL3

Application Details

Application Notes:	Approved: WB (0.2 - 1 µg/mL) Usage: Western Blot: Suggested dilution at 1 µg/mL in 5 % skim milk / PBS buffer, and HRP conjugated anti-Rabbit IgG should be diluted in 1: 50,000 - 100,000 as secondary antibody.
Comment:	Target Species of Antibody: Human
Restrictions:	For Research Use only

Handling

Format:	Lyophilized
Reconstitution:	Distilled water
Concentration:	Lot specific
Buffer:	Lyophilized from PBS with 2 % sucrose
Handling Advice:	Avoid repeat freeze-thaw cycles.
Storage:	4 °C, -20 °C
Storage Comment:	Long term: -20°C, the use of 50% glycerol is recommended if storing aliquots in -20°C for long term use (up to 1 year) Short term (less than 1 week): 4°C. Avoid freeze-thaw cycles.

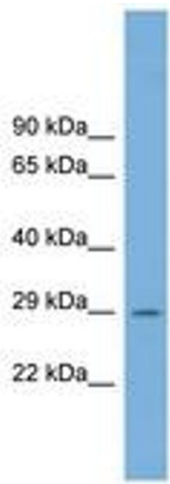


Image 1.