



[Go to Product page](#)

Datasheet for ABIN6743794
anti-RABGEF1 antibody (N-Term)

1 Image

Overview

Quantity:	100 µL
Target:	RABGEF1
Binding Specificity:	N-Term
Reactivity:	Human, Mouse, Rat, Cow, Dog, Horse, Chicken, Zebrafish (Danio rerio), Goat, Guinea Pig, Monkey
Host:	Rabbit
Clonality:	Polyclonal
Conjugate:	This RABGEF1 antibody is un-conjugated
Application:	Western Blotting (WB)

Product Details

Immunogen:	Synthetic peptide from N-Terminus of human RABGEF1 (A8K3R3, NP_055319). Percent identity by BLAST analysis: Human, Chimpanzee, Gorilla, Gibbon, Galago, Marmoset, Mouse, Rat, Goat, Elephant, Dog, Bovine, Horse, Opossum, Guinea pig, Zebra finch, Chicken, Platypus, Trout (100%), Xenopus (92%), Zebrafish (85%). Type of Immunogen: Synthetic peptide
Specificity:	Human RABGEF1
Predicted Reactivity:	Percent identity by BLAST analysis: Human, Mouse, Rat, Dog, Bovine, Goat, Guinea pig, Chicken (100%) Xenopus (92%) Zebrafish (85%).
Purification:	Immunoaffinity purified

Target Details

Target:	RABGEF1
Alternative Name:	RABGEF1 (RABGEF1 Products)
Background:	Name/Gene ID: RABGEF1 Synonyms: RABGEF1, Rabex-5, Rab5 GDP/GTP exchange factor, RABEX5, RAP1
Gene ID:	27342
NCBI Accession:	NP_055319
UniProt:	Q9UJ41
Pathways:	Regulation of Leukocyte Mediated Immunity, Positive Regulation of Immune Effector Process

Application Details

Application Notes:	Approved: WB (0.2 - 1 µg/mL) Usage: Western Blot: Suggested dilution at 1 µg/mL in 5 % skim milk / PBS buffer, and HRP conjugated anti-Rabbit IgG should be diluted in 1: 50,000 - 100,000 as secondary antibody.
Comment:	Target Species of Antibody: Human
Restrictions:	For Research Use only

Handling

Format:	Lyophilized
Reconstitution:	Distilled water
Concentration:	Lot specific
Buffer:	Lyophilized from PBS with 2 % sucrose
Handling Advice:	Avoid repeat freeze-thaw cycles.
Storage:	4 °C,-20 °C
Storage Comment:	Long term: -20°C, the use of 50% glycerol is recommended if storing aliquots in -20°C for long term use (up to 1 year) Short term (less than 1 week): 4°C. Avoid freeze-thaw cycles.

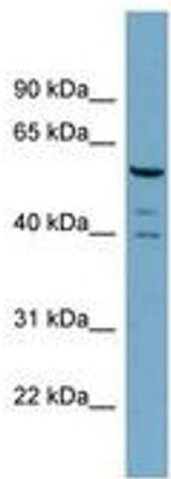


Image 1.