



[Go to Product page](#)

Datasheet for ABIN6743796  
**anti-PIK3R4 antibody (AA 360-409)**

1 Image

Overview

Quantity:	100 µL
Target:	PIK3R4
Binding Specificity:	AA 360-409
Reactivity:	Human, Mouse, Guinea Pig, Horse, Cow, Dog, Bat
Host:	Rabbit
Clonality:	Polyclonal
Conjugate:	This PIK3R4 antibody is un-conjugated
Application:	Western Blotting (WB)

Product Details

Immunogen:	Synthetic peptide located between aa360-409 of human PIK3R4 (Q99570, NP_055417). Percent identity by BLAST analysis: Human, Chimpanzee, Gorilla, Gibbon, Monkey, Galago, Mouse, Panda, Dog, Bat, Horse, Guinea pig (100%), Marmoset, Rabbit (92%), Rat (91%), Orangutan, Bovine (85%).  Type of Immunogen: Synthetic peptide
Specificity:	Human PIK3R4 / p150
Predicted Reactivity:	Percent identity by BLAST analysis: Human, Mouse, Dog, Horse, Guinea pig (100%) Rat (91%) Bovine (85%).
Purification:	Immunoaffinity purified

## Target Details

---

Target:	PIK3R4
Alternative Name:	PIK3R4 / p150 ( <a href="#">PIK3R4 Products</a> )
Background:	Name/Gene ID: PIK3R4 Family: Non-Protein Kinase  Synonyms: PIK3R4, Adaptor protein p150, p150, PI3-kinase p150 subunit, VPS15
Gene ID:	30849
NCBI Accession:	<a href="#">NP_055417</a>
UniProt:	<a href="#">Q99570</a>

## Application Details

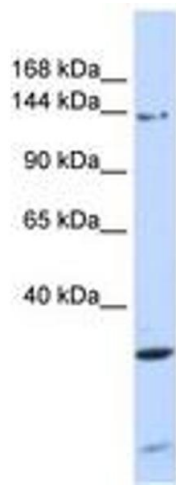
---

Application Notes:	Approved: WB (0.2 - 1 µg/mL)  Usage: Western Blot: Suggested dilution at 1 µg/mL in 5 % skim milk / PBS buffer, and HRP conjugated anti-Rabbit IgG should be diluted in 1: 50,000 - 100,000 as secondary antibody.
Comment:	Target Species of Antibody: Human
Restrictions:	For Research Use only

## Handling

---

Format:	Lyophilized
Reconstitution:	Distilled water
Concentration:	Lot specific
Buffer:	Lyophilized from PBS with 2 % sucrose
Handling Advice:	Avoid repeat freeze-thaw cycles.
Storage:	4 °C, -20 °C
Storage Comment:	Long term: -20°C, the use of 50% glycerol is recommended if storing aliquots in -20°C for long term use (up to 1 year) Short term (less than 1 week): 4°C. Avoid freeze-thaw cycles.



**Image 1.**