



[Go to Product page](#)

Datasheet for ABIN6743797

anti-Glutaminase antibody (C-Term)

1 Image

Overview

Quantity:	100 µL
Target:	Glutaminase (GLS)
Binding Specificity:	C-Term
Reactivity:	Human, Mouse, Rat, Dog, Guinea Pig, Horse, Rabbit, Monkey, Pig
Host:	Rabbit
Clonality:	Polyclonal
Conjugate:	This Glutaminase antibody is un-conjugated
Application:	Western Blotting (WB)

Product Details

Immunogen:	Synthetic peptide from C-Terminus of human GLS (094925, NP_055720). Percent identity by BLAST analysis: Human, Chimpanzee, Gorilla, Gibbon, Marmoset, Rat, Elephant, Rabbit, Horse, Pig, Guinea pig (100%), Mouse, Dog, Bat (85%). Type of Immunogen: Synthetic peptide
Specificity:	Human GLS
Predicted Reactivity:	Percent identity by BLAST analysis: Human, Rabbit, Horse, Pig, Guinea pig (100%) Rat (92%) Mouse, Dog (85%).
Purification:	Immunoaffinity purified

Target Details

Target:	Glutaminase (GLS)
Alternative Name:	GLS / Glutaminase (GLS Products)
Background:	Name/Gene ID: GLS Synonyms: GLS, AAD20, GLS1, GAM, Glutaminase C, GAC, K-glutaminase, KIAA0838, L-glutamine amidohydrolase, Glutaminase, KGA
Gene ID:	2744
NCBI Accession:	NP_055720
UniProt:	O94925
Pathways:	Feeding Behaviour , Dicarboxylic Acid Transport , Warburg Effect

Application Details

Application Notes:	Approved: WB (0.2 - 1 µg/mL) Usage: Western Blot: Suggested dilution at 1 µg/mL in 5 % skim milk / PBS buffer, and HRP conjugated anti-Rabbit IgG should be diluted in 1: 50,000 - 100,000 as secondary antibody.
Comment:	Target Species of Antibody: Human
Restrictions:	For Research Use only

Handling

Format:	Lyophilized
Reconstitution:	Distilled water
Concentration:	Lot specific
Buffer:	Lyophilized from PBS with 2 % sucrose
Handling Advice:	Avoid repeat freeze-thaw cycles.
Storage:	4 °C,-20 °C
Storage Comment:	Long term: -20°C, the use of 50% glycerol is recommended if storing aliquots in -20°C for long term use (up to 1 year) Short term (less than 1 week): 4°C. Avoid freeze-thaw cycles.

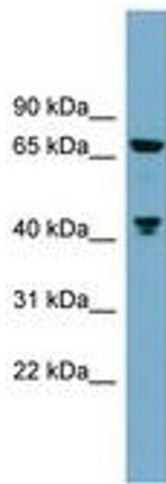


Image 1.