



[Go to Product page](#)

Datasheet for ABIN6743801  
**anti-SAPS1 antibody (N-Term)**

1 Image

Overview

Quantity:	100 µL
Target:	SAPS1
Binding Specificity:	N-Term
Reactivity:	Human, Cow, Guinea Pig, Horse, Rabbit, Monkey, Pig
Host:	Rabbit
Clonality:	Polyclonal
Conjugate:	This SAPS1 antibody is un-conjugated
Application:	Western Blotting (WB)

Product Details

Immunogen:	Synthetic peptide from N-Terminus of human PPP6R1 (Q9UPN7, NP_055746). Percent identity by BLAST analysis: Human, Chimpanzee, Gorilla, Gibbon, Monkey, Galago, Marmoset, Elephant, Panda, Bovine, Rabbit, Horse, Pig, Guinea pig (100%), Mouse, Rat, Dog (92%), Platypus (85%).  Type of Immunogen: Synthetic peptide
Specificity:	Human PPP6R1 / SAPS1
Predicted Reactivity:	Percent identity by BLAST analysis: Human, Bovine, Rabbit, Horse, Pig, Guinea pig (100%) Mouse, Rat, Dog (92%).
Purification:	Immunoaffinity purified

## Target Details

---

Target:	SAPS1
Alternative Name:	PPP6R1 / SAPS1 ( <a href="#">SAPS1 Products</a> )
Background:	Name/Gene ID: PPP6R1  Synonyms: PPP6R1, PP6R1, SAPS domain family, member 1, SAPS1, KIAA1115, SAP190, SAPS domain family member 1
Gene ID:	22870
NCBI Accession:	<a href="#">NP_055746</a>
UniProt:	<a href="#">Q9UPN7</a>

## Application Details

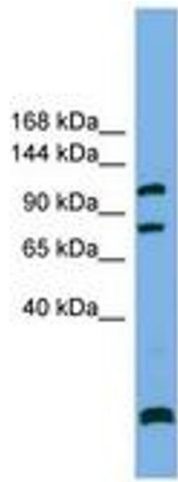
---

Application Notes:	Approved: WB (0.2 - 1 µg/mL)  Usage: Western Blot: Suggested dilution at 1 µg/mL in 5 % skim milk / PBS buffer, and HRP conjugated anti-Rabbit IgG should be diluted in 1: 50,000 - 100,000 as secondary antibody.
Comment:	Target Species of Antibody: Human
Restrictions:	For Research Use only

## Handling

---

Format:	Lyophilized
Reconstitution:	Distilled water
Concentration:	Lot specific
Buffer:	Lyophilized from PBS with 2 % sucrose
Handling Advice:	Avoid repeat freeze-thaw cycles.
Storage:	4 °C, -20 °C
Storage Comment:	Long term: -20°C, the use of 50% glycerol is recommended if storing aliquots in -20°C for long term use (up to 1 year)  Short term (less than 1 week): 4°C. Avoid freeze-thaw cycles.



**Image 1.**