



Datasheet for ABIN6743808
anti-ATG2A antibody (AA 107-156)



[Go to Product page](#)

1 Image

Overview

Quantity:	100 µL
Target:	ATG2A
Binding Specificity:	AA 107-156
Reactivity:	Human, Mouse, Cow, Dog, Horse, Pig, Rabbit, Rat, Bat, Monkey
Host:	Rabbit
Clonality:	Polyclonal
Conjugate:	This ATG2A antibody is un-conjugated
Application:	Western Blotting (WB)

Product Details

Immunogen:	Synthetic peptide located between aa107-156 of human ATG2A (Q2TAZ0, NP_055919). Percent identity by BLAST analysis: Human, Chimpanzee, Gibbon, Baboon, Monkey, Marmoset, Mouse, Rat, Panda, Dog, Bovine, Bat, Rabbit, Horse, Pig (100%), Galago, Elephant, Guinea pig, Xenopus (92%). Type of Immunogen: Synthetic peptide
Specificity:	Human ATG2A
Predicted Reactivity:	Percent identity by BLAST analysis: Human, Mouse, Rat, Dog, Bovine, Rabbit, Horse, Pig (100%) Guinea pig (92%).
Purification:	Immunoaffinity purified

Target Details

Target:	ATG2A
Alternative Name:	ATG2A (ATG2A Products)
Background:	Name/Gene ID: ATG2A Synonyms: ATG2A, KIAA0404, Autophagy related 2A
Gene ID:	23130
NCBI Accession:	NP_055919
UniProt:	Q2TAZ0

Application Details

Application Notes:	Approved: WB (0.2 - 1 µg/mL) Usage: Western Blot: Suggested dilution at 1 µg/mL in 5 % skim milk / PBS buffer, and HRP conjugated anti-Rabbit IgG should be diluted in 1: 50,000 - 100,000 as secondary antibody.
Comment:	Target Species of Antibody: Human
Restrictions:	For Research Use only

Handling

Format:	Lyophilized
Reconstitution:	Distilled water
Concentration:	Lot specific
Buffer:	Lyophilized from PBS with 2 % sucrose
Handling Advice:	Avoid repeat freeze-thaw cycles.
Storage:	4 °C, -20 °C
Storage Comment:	Long term: -20°C, the use of 50% glycerol is recommended if storing aliquots in -20°C for long term use (up to 1 year) Short term (less than 1 week): 4°C. Avoid freeze-thaw cycles.

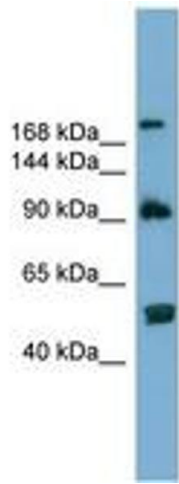


Image 1.