

Datasheet for ABIN6743817  
**anti-FAM98A antibody (AA 323-372)**[Go to Product page](#)

## 1 Image

## Overview

Quantity:	100 µL
Target:	FAM98A
Binding Specificity:	AA 323-372
Reactivity:	Human, Mouse, Rat, Cow, Dog, Horse, Rabbit, Pig, Bat, Monkey
Host:	Rabbit
Clonality:	Polyclonal
Conjugate:	This FAM98A antibody is un-conjugated
Application:	Western Blotting (WB)

## Product Details

Immunogen:	Synthetic peptide located between aa323-372 of human FAM98A (Q8NCA5, NP_056290). Percent identity by BLAST analysis: Human, Chimpanzee, Gorilla, Orangutan, Gibbon, Monkey, Galago, Marmoset, Mouse, Rat, Panda, Dog, Bovine, Bat, Rabbit, Horse, Pig (100%), Elephant (92%), Opossum (86%), Zebra finch (85%), Turkey, Platypus (84%), Guinea pig (82%).  Type of Immunogen: Synthetic peptide
Specificity:	Human FAM98A
Predicted Reactivity:	Percent identity by BLAST analysis: Human, Mouse, Dog, Bovine, Rabbit, Horse (100%).
Purification:	Immunoaffinity purified

## Target Details

Target:	FAM98A
Alternative Name:	FAM98A ( <a href="#">FAM98A Products</a> )
Background:	Name/Gene ID: FAM98A  Synonyms: FAM98A, DKFZP564F0522, Protein FAM98A
Gene ID:	25940
NCBI Accession:	<a href="#">NP_056290</a>
UniProt:	<a href="#">Q8NCA5</a>
Pathways:	<a href="#">SARS-CoV-2 Protein Interactome</a>

## Application Details

Application Notes:	Approved: WB (0.2 - 1 µg/mL)  Usage: Western Blot: Suggested dilution at 1 µg/mL in 5 % skim milk / PBS buffer, and HRP conjugated anti-Rabbit IgG should be diluted in 1: 50,000 - 100,000 as secondary antibody.
Comment:	Target Species of Antibody: Human
Restrictions:	For Research Use only

## Handling

Format:	Lyophilized
Reconstitution:	Distilled water
Concentration:	Lot specific
Buffer:	Lyophilized from PBS with 2 % sucrose
Handling Advice:	Avoid repeat freeze-thaw cycles.
Storage:	4 °C, -20 °C
Storage Comment:	Long term: -20°C, the use of 50% glycerol is recommended if storing aliquots in -20°C for long term use (up to 1 year)  Short term (less than 1 week): 4°C. Avoid freeze-thaw cycles.

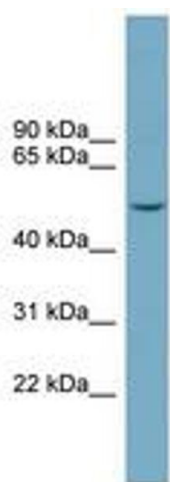


Image 1.