

Datasheet for ABIN6743819  
**anti-LSM14A antibody (AA 324-373)**[Go to Product page](#)

## 1 Image

## Overview

Quantity:	100 µL
Target:	LSM14A
Binding Specificity:	AA 324-373
Reactivity:	Human, Mouse, Rat, Rabbit, Cow, Dog, Guinea Pig, Horse, Pig, Monkey, Chicken
Host:	Rabbit
Clonality:	Polyclonal
Conjugate:	This LSM14A antibody is un-conjugated
Application:	Western Blotting (WB)

## Product Details

Immunogen:	Synthetic peptide located between aa324-373 of human LSM14A (Q8ND56, NP_056393). Percent identity by BLAST analysis: Human, Chimpanzee, Gorilla, Orangutan, Gibbon, Monkey, Galago, Marmoset, Mouse, Rat, Elephant, Dog, Bovine, Rabbit, Horse, Pig, Opossum, Guinea pig, Turkey, Zebra finch, Chicken, Platypus (100%), Xenopus, Zebrafish (92%).  Type of Immunogen: Synthetic peptide
Specificity:	Human LSM14A
Predicted Reactivity:	Percent identity by BLAST analysis: Human, Mouse, Rat, Dog, Horse, Pig, Chicken (100%) Zebrafish (92%).
Purification:	Immunoaffinity purified

## Target Details

Target:	LSM14A
Alternative Name:	LSM14A ( <a href="#">LSM14A Products</a> )
Background:	Name/Gene ID: LSM14A  Synonyms: LSM14A, AlphaSNBP, DKFZP434D1335, HRAP55, HRAP55A, FAM61A, LSM14 homolog A, RAP55, RNA-associated protein 55, RNA-associated protein 55A, Protein FAM61A, Protein LSM14 homolog A, Protein SCD6 homolog, RAP55A, C19orf13
Gene ID:	26065
NCBI Accession:	<a href="#">NP_056393</a>
UniProt:	<a href="#">Q8ND56</a>
Pathways:	<a href="#">Activation of Innate immune Response</a> , <a href="#">Ribonucleoprotein Complex Subunit Organization</a>

## Application Details

Application Notes:	Approved: WB (0.2 - 1 µg/mL)  Usage: Western Blot: Suggested dilution at 1 µg/mL in 5 % skim milk / PBS buffer, and HRP conjugated anti-Rabbit IgG should be diluted in 1: 50,000 - 100,000 as secondary antibody.
Comment:	Target Species of Antibody: Human
Restrictions:	For Research Use only

## Handling

Format:	Lyophilized
Reconstitution:	Distilled water
Concentration:	Lot specific
Buffer:	Lyophilized from PBS with 2 % sucrose
Handling Advice:	Avoid repeat freeze-thaw cycles.
Storage:	4 °C, -20 °C
Storage Comment:	Long term: -20°C, the use of 50% glycerol is recommended if storing aliquots in -20°C for long term use (up to 1 year)  Short term (less than 1 week): 4°C. Avoid freeze-thaw cycles.

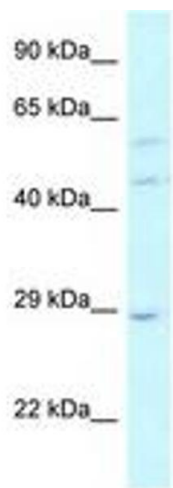


Image 1.