

Datasheet for ABIN6743829  
**anti-FBLN4 antibody (C-Term)**



[Go to Product page](#)

1 Image

## Overview

Quantity:	100 µL
Target:	FBLN4
Binding Specificity:	C-Term
Reactivity:	Human, Mouse, Rat, Cow, Dog, Guinea Pig, Horse, Zebrafish (Danio rerio), Bat, Hamster, Monkey, Pig
Host:	Rabbit
Clonality:	Polyclonal
Conjugate:	This FBLN4 antibody is un-conjugated
Application:	Western Blotting (WB)

## Product Details

Immunogen:	Synthetic peptide from C-Terminus of human EFEMP2 (O95967, NP_058634). Percent identity by BLAST analysis: Human, Chimpanzee, Gorilla, Gibbon, Monkey, Galago, Marmoset, Mouse, Rat, Hamster, Elephant, Dog, Bovine, Bat, Horse, Pig, Opossum, Guinea pig (100%), Platypus (92%), Xenopus, Zebrafish (85%), Stickleback (84%), Rabbit (81%).  Type of Immunogen: Synthetic peptide
Specificity:	Human EFEMP2 / Fibulin 4
Predicted Reactivity:	Percent identity by BLAST analysis: Human, Mouse, Rat, Dog, Bovine, Horse, Pig (100%).
Purification:	Immunoaffinity purified

## Target Details

---

Target:	FBLN4
Alternative Name:	FBLN4 / EFEMP2 ( <a href="#">FBLN4 Products</a> )
Background:	Name/Gene ID: EFEMP2  Synonyms: EFEMP2, ARCL1B, FIBL-4, Fibulin-4, Fibulin 4, Protein UPH1, MBP1, UPH1, FBLN4, Mutant p53 binding protein 1
Gene ID:	30008
NCBI Accession:	<a href="#">NP_058634</a>
UniProt:	<a href="#">O95967</a>

## Application Details

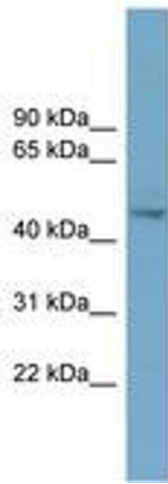
---

Application Notes:	Approved: WB (0.2 - 1 µg/mL)  Usage: Western Blot: Suggested dilution at 1 µg/mL in 5 % skim milk / PBS buffer, and HRP conjugated anti-Rabbit IgG should be diluted in 1: 50,000 - 100,000 as secondary antibody.
Comment:	Target Species of Antibody: Human
Restrictions:	For Research Use only

## Handling

---

Format:	Lyophilized
Reconstitution:	Distilled water
Concentration:	Lot specific
Buffer:	Lyophilized from PBS with 2 % sucrose
Handling Advice:	Avoid repeat freeze-thaw cycles.
Storage:	4 °C, -20 °C
Storage Comment:	Long term: -20°C, the use of 50% glycerol is recommended if storing aliquots in -20°C for long term use (up to 1 year)  Short term (less than 1 week): 4°C. Avoid freeze-thaw cycles.



**Image 1.**