

Datasheet for ABIN6743830 anti-TPK1 antibody (AA 36-85)



[Go to Product page](#)

1 Image

Overview

Quantity:	100 µL
Target:	TPK1
Binding Specificity:	AA 36-85
Reactivity:	Human, Mouse, Rat, Cow, Dog, Pig
Host:	Rabbit
Clonality:	Polyclonal
Conjugate:	This TPK1 antibody is un-conjugated
Application:	Western Blotting (WB)

Product Details

Immunogen:	Synthetic peptide located between aa36-85 of human TPK1 (Q9H3S4, NP_071890). Percent identity by BLAST analysis: Human, Chimpanzee, Gorilla, Gibbon, Monkey, Pig (100%), Galago, Marmoset, Rabbit, Horse, Opossum, Guinea pig (92%), Mouse, Rat, Elephant, Dog, Bovine (85%), Hamster (83%). Type of Immunogen: Synthetic peptide
Specificity:	Human TPK1
Predicted Reactivity:	Percent identity by BLAST analysis: Human, Pig (100%) Rabbit, Horse, Guinea pig (92%) Mouse, Rat, Dog, Bovine (85%).
Purification:	Immunoaffinity purified

Target Details

Target:	TPK1
Alternative Name:	TPK1 (TPK1 Products)
Background:	Name/Gene ID: TPK1 Synonyms: TPK1, Placental protein 20, PP20, Thiamin pyrophosphokinase 1, Thiamine diphosphokinase, Thiamine pyrophosphokinase 1, Thiamine kinase, HTPK1, THMD5
Gene ID:	27010
NCBI Accession:	NP_071890

Application Details

Application Notes:	Approved: WB (0.2 - 1 µg/mL) Usage: Western Blot: Suggested dilution at 1 µg/mL in 5 % skim milk / PBS buffer, and HRP conjugated anti-Rabbit IgG should be diluted in 1: 50,000 - 100,000 as secondary antibody.
Comment:	Target Species of Antibody: Human
Restrictions:	For Research Use only

Handling

Format:	Lyophilized
Reconstitution:	Distilled water
Concentration:	Lot specific
Buffer:	Lyophilized from PBS with 2 % sucrose
Handling Advice:	Avoid repeat freeze-thaw cycles.
Storage:	4 °C, -20 °C
Storage Comment:	Long term: -20°C, the use of 50% glycerol is recommended if storing aliquots in -20°C for long term use (up to 1 year) Short term (less than 1 week): 4°C. Avoid freeze-thaw cycles.

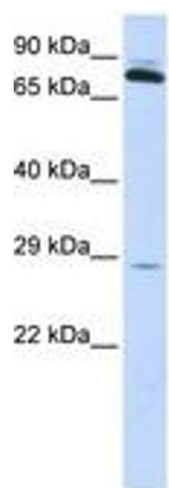


Image 1.