



[Go to Product page](#)

Datasheet for ABIN6743831
anti-Keratin 84 antibody (AA 215-264)

1 Image

Overview

Quantity:	100 µL
Target:	Keratin 84 (KRT84)
Binding Specificity:	AA 215-264
Reactivity:	Human, Mouse, Monkey, Cow
Host:	Rabbit
Clonality:	Polyclonal
Conjugate:	This Keratin 84 antibody is un-conjugated
Application:	Western Blotting (WB)

Product Details

Immunogen:	Synthetic peptide located between aa215-264 of human KRT84 (Q9NSB2, NP_149034). Percent identity by BLAST analysis: Human, Chimpanzee, Gorilla, Gibbon, Monkey, Marmoset, Mouse (100%), Rat, Hamster, Rabbit (92%), Elephant, Bovine (85%). Type of Immunogen: Synthetic peptide
Specificity:	Human KRT84
Predicted Reactivity:	Percent identity by BLAST analysis: Human, Mouse (100%) Rat, Rabbit (92%) Bovine (85%).
Purification:	Immunoaffinity purified

Target Details

Target:	Keratin 84 (KRT84)
---------	--------------------

Target Details

Alternative Name:	KRT84 / Keratin 84 / KRTHB4 (KRT84 Products)
Background:	Name/Gene ID: KRT84 Family: Keratin Synonyms: KRT84, Hard keratin, type II, 4, HB4, K84, Keratin 84, Keratin, type II cuticular Hb4, Hb-4, KRTHB4, Type II hair keratin Hb4, Keratin, hair, basic, 4, Keratin-84, Type II hair keratin 4, Type-II keratin Kb24
Gene ID:	3890
NCBI Accession:	NP_149034

Application Details

Application Notes:	Approved: WB (0.2 - 1 µg/mL) Usage: Western Blot: Suggested dilution at 1 µg/mL in 5 % skim milk / PBS buffer, and HRP conjugated anti-Rabbit IgG should be diluted in 1: 50,000 - 100,000 as secondary antibody.
Comment:	Target Species of Antibody: Human
Restrictions:	For Research Use only

Handling

Format:	Lyophilized
Reconstitution:	Distilled water
Concentration:	Lot specific
Buffer:	Lyophilized from PBS with 2 % sucrose
Storage:	4 °C,-20 °C
Storage Comment:	Long term: -20°C, the use of 50% glycerol is recommended if storing aliquots in -20°C for long term use (up to 1 year) Short term (less than 1 week): 4°C. Avoid freeze-thaw cycles.

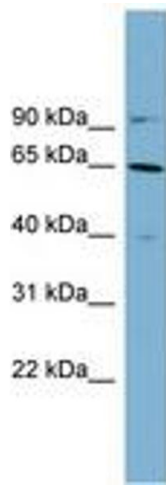


Image 1.