



[Go to Product page](#)

Datasheet for ABIN6743838  
**anti-Epsin 2 antibody (AA 180-229)**

1 Image

Overview

Quantity:	100 µL
Target:	Epsin 2 (EPN2)
Binding Specificity:	AA 180-229
Reactivity:	Human, Mouse, Rat, Monkey, Cow, Dog, Guinea Pig, Rabbit, Horse, Bat
Host:	Rabbit
Clonality:	Polyclonal
Conjugate:	This Epsin 2 antibody is un-conjugated
Application:	Western Blotting (WB)

Product Details

Immunogen:	Synthetic peptide located between aa180-229 of human EPN2 (Q52LD0, NP_683723). Percent identity by BLAST analysis: Human, Chimpanzee, Gorilla, Orangutan, Gibbon, Monkey, Marmoset, Mouse, Rat, Elephant, Panda, Dog, Bovine, Bat, Rabbit, Horse, Guinea pig (100%), Galago, Opossum, Turkey, Zebra finch, Chicken, Platypus (92%), Xenopus (84%).  Type of Immunogen: Synthetic peptide
Specificity:	Human EPN2
Predicted Reactivity:	Percent identity by BLAST analysis: Human, Mouse, Rat, Dog, Bovine, Rabbit, Horse, Guinea pig (100%) Chicken (92%).
Purification:	Immunoaffinity purified

## Target Details

---

Target:	Epsin 2 (EPN2)
Alternative Name:	EPN2 ( <a href="#">EPN2 Products</a> )
Background:	Name/Gene ID: EPN2  Synonyms: EPN2, Epsin-2, EHB21, EPS-15-interacting protein 2, Eps15 binding protein, Epsin 2, KIAA1065
Gene ID:	22905
NCBI Accession:	<a href="#">NP_683723</a>
UniProt:	<a href="#">O95208</a>
Pathways:	<a href="#">EGFR Downregulation</a>

## Application Details

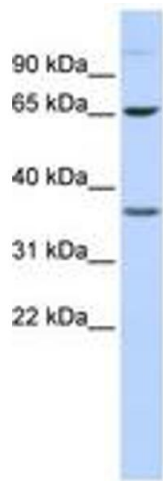
---

Application Notes:	Approved: WB (0.2 - 1 µg/mL)  Usage: Western Blot: Suggested dilution at 1 µg/mL in 5 % skim milk / PBS buffer, and HRP conjugated anti-Rabbit IgG should be diluted in 1: 50,000 - 100,000 as secondary antibody.
Comment:	Target Species of Antibody: Human
Restrictions:	For Research Use only

## Handling

---

Format:	Lyophilized
Reconstitution:	Distilled water
Concentration:	Lot specific
Buffer:	Lyophilized from PBS with 2 % sucrose
Handling Advice:	Avoid repeat freeze-thaw cycles.
Storage:	4 °C,-20 °C
Storage Comment:	Long term: -20°C, the use of 50% glycerol is recommended if storing aliquots in -20°C for long term use (up to 1 year)  Short term (less than 1 week): 4°C. Avoid freeze-thaw cycles.



**Image 1.**