



[Go to Product page](#)

Datasheet for ABIN6743841  
**anti-SENP5 antibody (AA 503-552)**

1 Image

Overview

Quantity:	100 µL
Target:	SENP5
Binding Specificity:	AA 503-552
Reactivity:	Human, Mouse, Rat, Monkey, Cow, Dog, Pig, Horse, Rabbit, Guinea Pig, Hamster, Bat
Host:	Rabbit
Clonality:	Polyclonal
Conjugate:	This SENP5 antibody is un-conjugated
Application:	Western Blotting (WB)

Product Details

Immunogen:	Synthetic peptide located between aa503-552 of human SENP5 (Q96HI0, NP_689912). Percent identity by BLAST analysis: Human, Chimpanzee, Gorilla, Gibbon, Monkey, Galago, Marmoset, Mouse, Rat, Hamster, Elephant, Panda, Dog, Bovine, Bat, Rabbit, Horse, Pig, Guinea pig, Platypus (100%), Opossum (92%), Xenopus (91%), Turkey, Zebra finch, Chicken (85%).  Type of Immunogen: Synthetic peptide
Specificity:	Human SENP5
Predicted Reactivity:	Percent identity by BLAST analysis: Human, Mouse, Rat, Dog, Bovine, Horse (100%) Chicken (85%).
Purification:	Immunoaffinity purified

## Target Details

---

Target:	SENP5
Alternative Name:	SENP5 ( <a href="#">SENP5 Products</a> )
Background:	Name/Gene ID: SENP5 Subfamily: Cysteine C48 Family: Protease  Synonyms: SENP5, Sentrin-specific protease 5, FKSG45
Gene ID:	205564
NCBI Accession:	<a href="#">NP_689912</a>
UniProt:	<a href="#">Q96HI0</a>

## Application Details

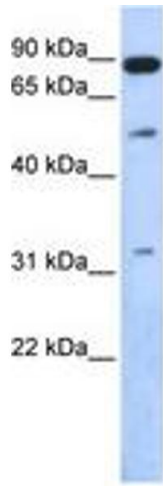
---

Application Notes:	Approved: WB (0.2 - 1 µg/mL)  Usage: Western Blot: Suggested dilution at 1 µg/mL in 5 % skim milk / PBS buffer, and HRP conjugated anti-Rabbit IgG should be diluted in 1: 50,000 - 100,000 as secondary antibody.
Comment:	Target Species of Antibody: Human
Restrictions:	For Research Use only

## Handling

---

Format:	Lyophilized
Reconstitution:	Reconstitute with 50 µL sterile ddH <sub>2</sub> O.
Concentration:	Lot specific
Buffer:	Lyophilized from PBS with 2 % sucrose
Handling Advice:	Avoid repeat freeze-thaw cycles.
Storage:	4 °C, -20 °C
Storage Comment:	Long term: -20°C, the use of 50% glycerol is recommended if storing aliquots in -20°C for long term use (up to 1 year) Short term (less than 1 week): 4°C. Avoid freeze-thaw cycles.



**Image 1.**