



[Go to Product page](#)

Datasheet for ABIN6743849  
**anti-LYSMD2 antibody (AA 71-120)**

1 Image

Overview

Quantity:	100 µL
Target:	LYSMD2
Binding Specificity:	AA 71-120
Reactivity:	Human, Mouse, Pig, Rabbit, Cow, Guinea Pig, Rat, Monkey
Host:	Rabbit
Clonality:	Polyclonal
Conjugate:	This LYSMD2 antibody is un-conjugated
Application:	Western Blotting (WB)

Product Details

Immunogen:	Synthetic peptide located between aa71-120 of human LYSMD2 (Q8IV50, NP_699205). Percent identity by BLAST analysis: Human, Chimpanzee, Gibbon, Galago, Marmoset, Mouse, Rat, Bovine, Rabbit, Pig (100%), Elephant (92%), Opossum, Zebra finch, Chicken (85%).  Type of Immunogen: Synthetic peptide
Specificity:	Human LYSMD2
Predicted Reactivity:	Percent identity by BLAST analysis: Mouse, Rat, Rabbit, Pig (100%) Chicken (85%).
Purification:	Immunoaffinity purified

Target Details

Target:	LYSMD2
---------	--------

## Target Details

---

Alternative Name: [LYSMD2 \(LYSMD2 Products\)](#)

Background: Name/Gene ID: LYSMD2

Synonyms: LYSMD2

Gene ID: 256586

NCBI Accession: [NP\\_699205](#)

UniProt: [Q8IV50](#)

## Application Details

---

Application Notes: Approved: WB (0.2 - 1 µg/mL)

Usage: Western Blot: Suggested dilution at 1 µg/mL in 5 % skim milk / PBS buffer, and HRP conjugated anti-Rabbit IgG should be diluted in 1: 50,000 - 100,000 as secondary antibody.

Comment: Target Species of Antibody: Human

Restrictions: For Research Use only

## Handling

---

Format: Lyophilized

Reconstitution: Distilled water

Concentration: Lot specific

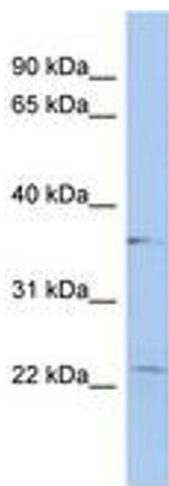
Buffer: Lyophilized from PBS with 2 % sucrose

Handling Advice: Avoid repeat freeze-thaw cycles.

Storage: 4 °C, -20 °C

Storage Comment: Long term: -20°C, the use of 50% glycerol is recommended if storing aliquots in -20°C for long term use (up to 1 year)

Short term (less than 1 week): 4°C. Avoid freeze-thaw cycles.



**Image 1.**