



[Go to Product page](#)

Datasheet for ABIN6743852  
**anti-FAM217A antibody (AA 179-228)**

1 Image

Overview

Quantity:	100 µL
Target:	FAM217A
Binding Specificity:	AA 179-228
Reactivity:	Human, Guinea Pig
Host:	Rabbit
Clonality:	Polyclonal
Conjugate:	This FAM217A antibody is un-conjugated
Application:	Western Blotting (WB)

Product Details

Immunogen:	Synthetic peptide located between aa179-228 of human FAM217A (Q8IXS0, NP_775834). Percent identity by BLAST analysis: Human, Gorilla (100%), Gibbon, Monkey, Marmoset, Mouse, Elephant, Panda, Dog, Bovine, Bat, Rabbit, Opossum (92%), Galago, Horse, Guinea pig (85%), Rat (84%).  Type of Immunogen: Synthetic peptide
Specificity:	Human C6orf146
Predicted Reactivity:	Percent identity by BLAST analysis: Dog, Bovine, Rabbit (92%) Guinea pig (85%).
Purification:	Immunoaffinity purified

## Target Details

---

Target:	FAM217A
Alternative Name:	C6orf146 ( <a href="#">FAM217A Products</a> )
Background:	Name/Gene ID: FAM217A  Synonyms: FAM217A, C6orf146, Protein FAM217A
Gene ID:	222826
NCBI Accession:	<a href="#">NP_775834</a>
UniProt:	<a href="#">Q8IXS0</a>

## Application Details

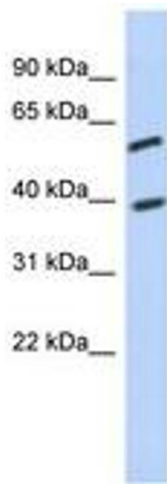
---

Application Notes:	Approved: WB (0.2 - 1 µg/mL)  Usage: Western Blot: Suggested dilution at 1 µg/mL in 5 % skim milk / PBS buffer, and HRP conjugated anti-Rabbit IgG should be diluted in 1: 50,000 - 100,000 as secondary antibody.
Comment:	Target Species of Antibody: Human
Restrictions:	For Research Use only

## Handling

---

Format:	Lyophilized
Reconstitution:	Distilled water
Concentration:	Lot specific
Buffer:	Lyophilized from PBS with 2 % sucrose
Handling Advice:	Avoid repeat freeze-thaw cycles.
Storage:	4 °C, -20 °C
Storage Comment:	Long term: -20°C, the use of 50% glycerol is recommended if storing aliquots in -20°C for long term use (up to 1 year)  Short term (less than 1 week): 4°C. Avoid freeze-thaw cycles.



**Image 1.**