



Datasheet for ABIN6743860  
**anti-C5orf36 antibody (AA 71-120)**



[Go to Product page](#)

1 Image

Overview

Quantity:	100 µL
Target:	C5orf36
Binding Specificity:	AA 71-120
Reactivity:	Human, Cow, Horse, Pig, Bat
Host:	Rabbit
Clonality:	Polyclonal
Conjugate:	This C5orf36 antibody is un-conjugated
Application:	Western Blotting (WB)

Product Details

Immunogen:	Synthetic peptide located between aa71-120 of human KIAA0825 (Q8IV33, NP_775936). Percent identity by BLAST analysis: Human, Gorilla, Bat, Horse, Pig (100%), Gibbon, Galago, Dog, Guinea pig, Turkey, Chicken, Lizard (92%), Marmoset, Elephant, Bovine, Zebra finch (85%).  Type of Immunogen: Synthetic peptide
Specificity:	Human KIAA0825 / C5orf36
Predicted Reactivity:	Percent identity by BLAST analysis: Human, Monkey (100%) Dog (92%) Bovine (85%).
Purification:	Immunoaffinity purified

Target Details

Target:	C5orf36
---------	---------

## Target Details

---

Alternative Name: KIAA0825 ([C5orf36 Products](#))

Background: Name/Gene ID: KIAA0825

Synonyms: KIAA0825, C5orf36

Gene ID: 285600

NCBI Accession: [NP\\_775936](#)

UniProt: [Q8IV33](#)

## Application Details

---

Application Notes: Approved: WB (0.2 - 1 µg/mL)

Usage: Western Blot: Suggested dilution at 1 µg/mL in 5 % skim milk / PBS buffer, and HRP conjugated anti-Rabbit IgG should be diluted in 1: 50,000 - 100,000 as secondary antibody.

Comment: Target Species of Antibody: Human

Restrictions: For Research Use only

## Handling

---

Format: Lyophilized

Reconstitution: Distilled water

Concentration: Lot specific

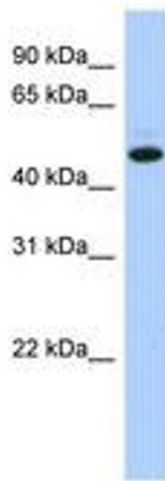
Buffer: Lyophilized from PBS with 2 % sucrose

Handling Advice: Avoid repeat freeze-thaw cycles.

Storage: 4 °C, -20 °C

Storage Comment: Long term: -20°C, the use of 50% glycerol is recommended if storing aliquots in -20°C for long term use (up to 1 year)

Short term (less than 1 week): 4°C. Avoid freeze-thaw cycles.



**Image 1.**