



[Go to Product page](#)

Datasheet for ABIN6743875
anti-Proline Rich 18 antibody (AA 35-84)

1 Image

Overview

Quantity:	100 µL
Target:	Proline Rich 18 (PRR18)
Binding Specificity:	AA 35-84
Reactivity:	Human
Host:	Rabbit
Clonality:	Polyclonal
Conjugate:	This Proline Rich 18 antibody is un-conjugated
Application:	Western Blotting (WB)

Product Details

Immunogen:	Synthetic peptide located between aa35-84 of human PRR18 (Q8N4B5, NP_787118). Percent identity by BLAST analysis: Human, Chimpanzee (100%), Monkey, Marmoset (92%). Type of Immunogen: Synthetic peptide
Specificity:	Human PRR18
Predicted Reactivity:	Percent identity by BLAST analysis: Human (100%).
Purification:	Immunoaffinity purified

Target Details

Target:	Proline Rich 18 (PRR18)
Alternative Name:	PRR18 (PRR18 Products)

Target Details

Background:	Name/Gene ID: PRR18 Synonyms: PRR18, Proline rich 18, Proline rich region 18, Proline-rich protein 18
Gene ID:	285800
NCBI Accession:	NP_787118
UniProt:	Q8N4B5

Application Details

Application Notes:	Approved: WB (0.2 - 1 µg/mL) Usage: Western Blot: Suggested dilution at 1 µg/mL in 5 % skim milk / PBS buffer, and HRP conjugated anti-Rabbit IgG should be diluted in 1: 50,000 - 100,000 as secondary antibody.
Comment:	Target Species of Antibody: Human
Restrictions:	For Research Use only

Handling

Format:	Lyophilized
Reconstitution:	Distilled water
Concentration:	Lot specific
Buffer:	Lyophilized from PBS with 2 % sucrose
Handling Advice:	Avoid repeat freeze-thaw cycles.
Storage:	4 °C, -20 °C
Storage Comment:	Long term: -20°C, the use of 50% glycerol is recommended if storing aliquots in -20°C for long term use (up to 1 year) Short term (less than 1 week): 4°C. Avoid freeze-thaw cycles.

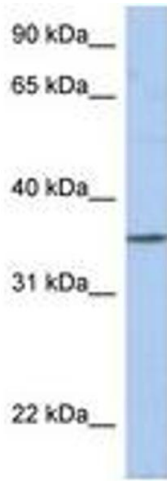


Image 1.