



[Go to Product page](#)

Datasheet for ABIN6743880  
**anti-ACTL9 antibody (AA 143-192)**

1 Image

Overview

Quantity:	100 µL
Target:	ACTL9
Binding Specificity:	AA 143-192
Reactivity:	Human, Mouse, Guinea Pig, Monkey, Rat
Host:	Rabbit
Clonality:	Polyclonal
Conjugate:	This ACTL9 antibody is un-conjugated
Application:	Western Blotting (WB)

Product Details

Immunogen:	Synthetic peptide located between aa143-192 of human ACTL9 (Q8TC94, NP_848620). Percent identity by BLAST analysis: Human, Chimpanzee, Gorilla, Gibbon, Monkey, Galago, Marmoset, Mouse, Rat, Guinea pig (100%), Panda, Dog, Bovine, Horse, Pig, Opossum (92%), Hamster, Elephant, Bat, Rabbit (84%).  Type of Immunogen: Synthetic peptide
Specificity:	Human ACTL9
Predicted Reactivity:	Percent identity by BLAST analysis: Human, Mouse, Rat (100%) Bovine, Dog (92%) Monkey (84%).
Purification:	Immunoaffinity purified

## Target Details

---

Target: ACTL9

Alternative Name: ACTL9 ([ACTL9 Products](#))

Background: Name/Gene ID: ACTL9

Synonyms: ACTL9, ACTL7C, Actin-like 9, Actin-like protein 9, HSD21

Gene ID: 284382

NCBI Accession: [NP\\_848620](#)

UniProt: [Q8TC94](#)

## Application Details

---

Application Notes: Approved: WB (0.2 - 1 µg/mL)

Usage: Western Blot: Suggested dilution at 1 µg/mL in 5 % skim milk / PBS buffer, and HRP conjugated anti-Rabbit IgG should be diluted in 1: 50,000 - 100,000 as secondary antibody.

Comment: Target Species of Antibody: Human

Restrictions: For Research Use only

## Handling

---

Format: Lyophilized

Reconstitution: Distilled water

Concentration: Lot specific

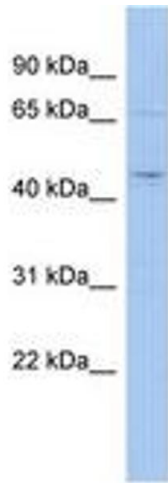
Buffer: Lyophilized from PBS with 2 % sucrose

Handling Advice: Avoid repeat freeze-thaw cycles.

Storage: 4 °C, -20 °C

Storage Comment: Long term: -20°C, the use of 50% glycerol is recommended if storing aliquots in -20°C for long term use (up to 1 year)

Short term (less than 1 week): 4°C. Avoid freeze-thaw cycles.



**Image 1.**