



Datasheet for ABIN6743881  
**anti-C1ORF110 antibody (AA 35-84)**



[Go to Product page](#)

1 Image

Overview

Quantity:	100 µL
Target:	C1ORF110
Binding Specificity:	AA 35-84
Reactivity:	Human, Mouse, Pig, Cow, Dog, Horse, Rabbit
Host:	Rabbit
Clonality:	Polyclonal
Conjugate:	This C1ORF110 antibody is un-conjugated
Application:	Western Blotting (WB)

Product Details

Immunogen:	Synthetic peptide located between aa35-84 of human C1orf110 (Q86UF4, NP_848645). Percent identity by BLAST analysis: Human, Gorilla, Gibbon, Galago, Mouse, Panda, Dog, Bovine, Rabbit, Horse, Pig (100%), Monkey, Rat, Elephant, Bat, Guinea pig (92%), Marmoset (85%).  Type of Immunogen: Synthetic peptide
Specificity:	Human C1orf110
Predicted Reactivity:	Percent identity by BLAST analysis: Human, Dog, Rabbit, Horse, Pig (100%) Guinea pig (92%).
Purification:	Immunoaffinity purified

Target Details

Target:	C1ORF110
---------	----------

## Target Details

---

Alternative Name: C1orf110 ([C1ORF110 Products](#))

Background: Name/Gene ID: C1orf110

Synonyms: C1orf110, RP11-331H2.2

Gene ID: 339512

NCBI Accession: [NP\\_848645](#)

UniProt: [Q86UF4](#)

## Application Details

---

Application Notes: Approved: WB (0.2 - 1 µg/mL)

Usage: Western Blot: Suggested dilution at 1 µg/mL in 5 % skim milk / PBS buffer, and HRP conjugated anti-Rabbit IgG should be diluted in 1: 50,000 - 100,000 as secondary antibody.

Comment: Target Species of Antibody: Human

Restrictions: For Research Use only

## Handling

---

Format: Lyophilized

Reconstitution: Distilled water

Concentration: Lot specific

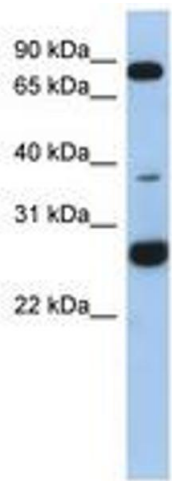
Buffer: Lyophilized from PBS with 2 % sucrose

Handling Advice: Avoid repeat freeze-thaw cycles.

Storage: 4 °C, -20 °C

Storage Comment: Long term: -20°C, the use of 50% glycerol is recommended if storing aliquots in -20°C for long term use (up to 1 year)

Short term (less than 1 week): 4°C. Avoid freeze-thaw cycles.



**Image 1.**