



[Go to Product page](#)

Datasheet for ABIN6743889  
**anti-EFHA2 antibody (AA 35-84)**

1 Image

Overview

Quantity:	100 µL
Target:	EFHA2 (MICU3)
Binding Specificity:	AA 35-84
Reactivity:	Human, Cow, Pig, Horse
Host:	Rabbit
Clonality:	Polyclonal
Conjugate:	This EFHA2 antibody is un-conjugated
Application:	Western Blotting (WB)

Product Details

Immunogen:	Synthetic peptide located between aa35-84 of human MICU3 (Q86XE3, NP_859074). Percent identity by BLAST analysis: Human, Chimpanzee, Gorilla, Gibbon (100%), Monkey, Marmoset, Rabbit (92%), Horse, Pig (83%).  Type of Immunogen: Synthetic peptide
Specificity:	Human EFHA2
Predicted Reactivity:	Percent identity by BLAST analysis: Human (100%) Rabbit (92%) Horse, Pig (83%).
Purification:	Immunoaffinity purified

Target Details

Target:	EFHA2 (MICU3)
---------	---------------

## Target Details

---

Alternative Name: MICU3 / EFHA2 ([MICU3 Products](#))

---

Background: Name/Gene ID: MICU3

Synonyms: MICU3, EFHA2, EF hand domain family A2

---

Gene ID: 286097

---

NCBI Accession: [NP\\_859074](#)

---

UniProt: [Q86XE3](#)

---

## Application Details

---

Application Notes: Approved: WB (0.2 - 1 µg/mL)

Usage: Western Blot: Suggested dilution at 1 µg/mL in 5 % skim milk / PBS buffer, and HRP conjugated anti-Rabbit IgG should be diluted in 1: 50,000 - 100,000 as secondary antibody.

---

Comment: Target Species of Antibody: Human

---

Restrictions: For Research Use only

---

## Handling

---

Format: Lyophilized

---

Reconstitution: Distilled water

---

Concentration: Lot specific

---

Buffer: Lyophilized from PBS with 2 % sucrose

---

Handling Advice: Avoid repeat freeze-thaw cycles.

---

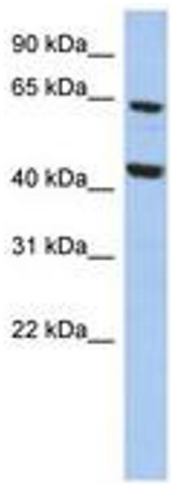
Storage: 4 °C, -20 °C

---

Storage Comment: Long term: -20°C, the use of 50% glycerol is recommended if storing aliquots in -20°C for long term use (up to 1 year)

Short term (less than 1 week): 4°C. Avoid freeze-thaw cycles.

---



**Image 1.**