



[Go to Product page](#)

Datasheet for ABIN6743890
anti-EFHA2 antibody (AA 71-120)

1 Image

Overview

Quantity:	100 µL
Target:	EFHA2 (MICU3)
Binding Specificity:	AA 71-120
Reactivity:	Human, Mouse
Host:	Rabbit
Clonality:	Polyclonal
Conjugate:	This EFHA2 antibody is un-conjugated
Application:	Western Blotting (WB)

Product Details

Immunogen:	Synthetic peptide located between aa71-120 of human MICU3 (Q86XE3, NP_859074). Percent identity by BLAST analysis: Human, Chimpanzee, Gorilla, Gibbon, Mouse (100%), Monkey, Marmoset (92%), Rabbit (91%), Bovine, Pig (90%). Type of Immunogen: Synthetic peptide
Specificity:	Human EFHA2
Predicted Reactivity:	Percent identity by BLAST analysis: Human, Mouse (100%) Rabbit (91%) Bovine, Pig (90%).
Purification:	Immunoaffinity purified

Target Details

Target:	EFHA2 (MICU3)
---------	---------------

Target Details

Alternative Name: MICU3 / EFHA2 ([MICU3 Products](#))

Background: Name/Gene ID: MICU3

Synonyms: MICU3, EFHA2, EF hand domain family A2

Gene ID: 286097

NCBI Accession: [NP_859074](#)

UniProt: [Q86XE3](#)

Application Details

Application Notes: Approved: WB (0.2 - 1 µg/mL)

Usage: Western Blot: Suggested dilution at 1 µg/mL in 5 % skim milk / PBS buffer, and HRP conjugated anti-Rabbit IgG should be diluted in 1: 50,000 - 100,000 as secondary antibody.

Comment: Target Species of Antibody: Human

Restrictions: For Research Use only

Handling

Format: Lyophilized

Reconstitution: Distilled water

Concentration: Lot specific

Buffer: Lyophilized from PBS with 2 % sucrose

Handling Advice: Avoid repeat freeze-thaw cycles.

Storage: 4 °C, -20 °C

Storage Comment: Long term: -20°C, the use of 50% glycerol is recommended if storing aliquots in -20°C for long term use (up to 1 year)

Short term (less than 1 week): 4°C. Avoid freeze-thaw cycles.

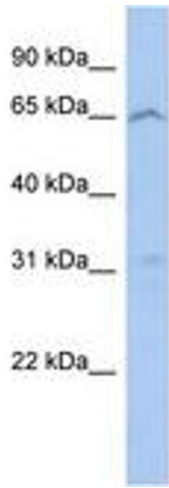


Image 1.