

Datasheet for ABIN6743891
anti-DPY19L4 antibody (AA 575-624)[Go to Product page](#)

1 Image

Overview

| | |
|----------------------|--|
| Quantity: | 100 µL |
| Target: | DPY19L4 |
| Binding Specificity: | AA 575-624 |
| Reactivity: | Human, Mouse, Cow, Dog, Guinea Pig, Horse, Monkey, Chicken |
| Host: | Rabbit |
| Clonality: | Polyclonal |
| Conjugate: | This DPY19L4 antibody is un-conjugated |
| Application: | Western Blotting (WB) |

Product Details

| | |
|-----------------------|---|
| Immunogen: | Synthetic peptide located between aa575-624 of human DPY19L4 (Q7Z388, NP_861452). Percent identity by BLAST analysis: Human, Gorilla, Orangutan, Monkey, Marmoset, Elephant, Dog, Bovine, Horse, Guinea pig, Zebra finch, Chicken (100%), Gibbon, Galago, Rat, Rabbit, Opossum, Turkey, Platypus (92%), Mouse, Lizard (85%). Type of Immunogen: Synthetic peptide |
| Specificity: | Human DPY19L4 |
| Predicted Reactivity: | Percent identity by BLAST analysis: Dog, Bovine, Horse, Chicken (100%) Rat, Rabbit (92%) Mouse (85%). |
| Purification: | Immunoaffinity purified |

Target Details

| | |
|-------------------|---|
| Target: | DPY19L4 |
| Alternative Name: | DPY19L4 (DPY19L4 Products) |
| Background: | Name/Gene ID: DPY19L4 Synonyms: DPY19L4, Dpy-19-like 4 (C. elegans), Protein dpy-19 homolog 4, Dpy-19-like protein 4 |
| Gene ID: | 286148 |
| NCBI Accession: | NP_861452 |
| UniProt: | Q7Z388 |

Application Details

| | |
|--------------------|--|
| Application Notes: | Approved: WB (0.2 - 1 µg/mL) Usage: Western Blot: Suggested dilution at 1 µg/mL in 5 % skim milk / PBS buffer, and HRP conjugated anti-Rabbit IgG should be diluted in 1: 50,000 - 100,000 as secondary antibody. |
| Comment: | Target Species of Antibody: Human |
| Restrictions: | For Research Use only |

Handling

| | |
|------------------|---|
| Format: | Lyophilized |
| Reconstitution: | Distilled water |
| Concentration: | Lot specific |
| Buffer: | Lyophilized from PBS with 2 % sucrose |
| Handling Advice: | Avoid repeat freeze-thaw cycles. |
| Storage: | 4 °C, -20 °C |
| Storage Comment: | Long term: -20°C, the use of 50% glycerol is recommended if storing aliquots in -20°C for long term use (up to 1 year) Short term (less than 1 week): 4°C. Avoid freeze-thaw cycles. |

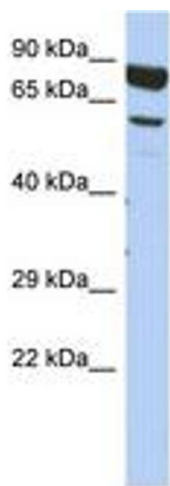


Image 1.