



[Go to Product page](#)

Datasheet for ABIN6743893

## anti-VSTM2A antibody (AA 107-156)

### 1 Image

#### Overview

Quantity:	100 µL
Target:	VSTM2A
Binding Specificity:	AA 107-156
Reactivity:	Mouse, Human, Rat, Dog, Horse, Cow, Guinea Pig, Pig, Rabbit, Monkey
Host:	Rabbit
Clonality:	Polyclonal
Conjugate:	This VSTM2A antibody is un-conjugated
Application:	Western Blotting (WB)

#### Product Details

Immunogen:	Synthetic peptide located between aa107-156 of human VSTM2A (B5MC94, NP_872352). Percent identity by BLAST analysis: Human, Chimpanzee, Gorilla, Gibbon, Monkey, Galago, Marmoset, Mouse, Rat, Elephant, Panda, Dog, Bovine, Rabbit, Horse, Pig, Guinea pig (100%), Bat (92%), Opossum, Turkey, Zebra finch, Chicken, Platypus (85%).  Type of Immunogen: Synthetic peptide
Specificity:	Human VSTM2A
Predicted Reactivity:	Percent identity by BLAST analysis: Human, Mouse, Dog, Bovine, Rabbit, Pig, Guinea pig (100%) Chicken (85%).
Purification:	Immunoaffinity purified

## Target Details

---

Target:	VSTM2A
Alternative Name:	VSTM2A ( <a href="#">VSTM2A Products</a> )
Background:	Name/Gene ID: VSTM2A  Synonyms: VSTM2A, VSTM2, Hypothetical protein MGC33530
Gene ID:	222008
NCBI Accession:	<a href="#">NP_872352</a>
UniProt:	<a href="#">Q8TAG5</a>

## Application Details

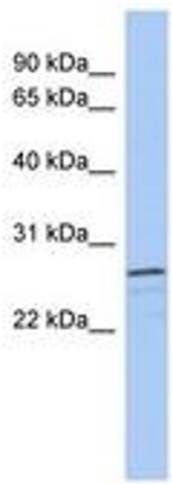
---

Application Notes:	Approved: WB (0.2 - 1 µg/mL)  Usage: Western Blot: Suggested dilution at 1 µg/mL in 5 % skim milk / PBS buffer, and HRP conjugated anti-Rabbit IgG should be diluted in 1: 50,000 - 100,000 as secondary antibody.
Comment:	Target Species of Antibody: Human
Restrictions:	For Research Use only

## Handling

---

Format:	Lyophilized
Reconstitution:	Distilled water
Concentration:	Lot specific
Buffer:	Lyophilized from PBS with 2 % sucrose
Handling Advice:	Avoid repeat freeze-thaw cycles.
Storage:	4 °C, -20 °C
Storage Comment:	Long term: -20°C, the use of 50% glycerol is recommended if storing aliquots in -20°C for long term use (up to 1 year)  Short term (less than 1 week): 4°C. Avoid freeze-thaw cycles.



**Image 1.**