



Datasheet for ABIN6743903
anti-HIPK1 antibody (AA 1043-1092)



[Go to Product page](#)

1 Image

Overview

Quantity:	100 µL
Target:	HIPK1
Binding Specificity:	AA 1043-1092
Reactivity:	Human, Mouse, Rat, Monkey, Dog
Host:	Rabbit
Clonality:	Polyclonal
Conjugate:	This HIPK1 antibody is un-conjugated
Application:	Western Blotting (WB)

Product Details

Immunogen:	Synthetic peptide located between aa1043-1092 of human HIPK1 (Q86Z02, NP_938009). Percent identity by BLAST analysis: Human, Chimpanzee, Gorilla, Gibbon, Monkey, Galago, Marmoset (100%), Panda, Bovine, Bat, Rabbit, Horse, Pig, Guinea pig (92%), Mouse, Rat, Elephant, Dog (85%). Type of Immunogen: Synthetic peptide
Specificity:	Human HIPK1
Predicted Reactivity:	Percent identity by BLAST analysis: Human (100%) Bovine, Rabbit, Horse, Pig (92%) Mouse, Rat, Dog (85%).
Purification:	Immunoaffinity purified

Target Details

Target:	HIPK1
Alternative Name:	HIPK1 (HIPK1 Products)
Background:	Name/Gene ID: HIPK1 Subfamily: MNB/DYRK Family: Protein Kinase Synonyms: HIPK1, Nbak2, Myak, KIAA0630
Gene ID:	204851
NCBI Accession:	NP_938009
UniProt:	Q86Z02

Application Details

Application Notes:	Approved: WB (0.2 - 1 µg/mL) Usage: Western Blot: Suggested dilution at 1 µg/mL in 5 % skim milk / PBS buffer, and HRP conjugated anti-Rabbit IgG should be diluted in 1: 50,000 - 100,000 as secondary antibody.
Comment:	Target Species of Antibody: Human
Restrictions:	For Research Use only

Handling

Format:	Lyophilized
Reconstitution:	Distilled water
Concentration:	Lot specific
Buffer:	Lyophilized from PBS with 2 % sucrose
Handling Advice:	Avoid repeat freeze-thaw cycles.
Storage:	4 °C,-20 °C
Storage Comment:	Long term: -20°C, the use of 50% glycerol is recommended if storing aliquots in -20°C for long term use (up to 1 year) Short term (less than 1 week): 4°C. Avoid freeze-thaw cycles.

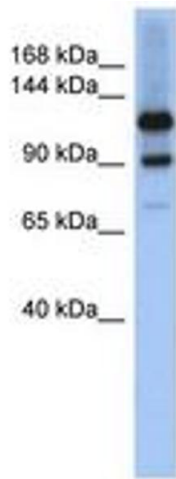


Image 1.