



[Go to Product page](#)

Datasheet for ABIN6743913  
**anti-C10ORF96 antibody (AA 143-192)**

1 Image

### Overview

Quantity:	100 µL
Target:	C10ORF96 (C10orf96)
Binding Specificity:	AA 143-192
Reactivity:	Human, Guinea Pig, Rabbit, Dog, Monkey
Host:	Rabbit
Clonality:	Polyclonal
Conjugate:	This C10ORF96 antibody is un-conjugated
Application:	Western Blotting (WB)

### Product Details

Immunogen:	Synthetic peptide located between aa143-192 of human CCDC172 (P0C7W6, NP_940917). Percent identity by BLAST analysis: Human, Chimpanzee, Gorilla, Gibbon, Monkey, Marmoset (100%), Pig (92%), Galago, Panda, Dog, Bat, Rabbit, Guinea pig (85%), Horse (84%).  Type of Immunogen: Synthetic peptide
Specificity:	Human C10orf96
Predicted Reactivity:	Percent identity by BLAST analysis: Pig (92%) Dog, Rabbit, Guinea pig (85%).
Purification:	Immunoaffinity purified

### Target Details

Target:	C10ORF96 (C10orf96)
---------	---------------------

## Target Details

---

Alternative Name:	C10orf96 ( <a href="#">C10orf96 Products</a> )
Background:	Name/Gene ID: CCDC172  Synonyms: CCDC172, C10orf96, UPF0628 protein C10orf96
Gene ID:	374355
NCBI Accession:	<a href="#">NP_940917</a>
UniProt:	<a href="#">P0C7W6</a>

## Application Details

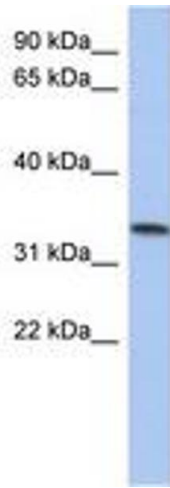
---

Application Notes:	Approved: WB (0.2 - 1 µg/mL)  Usage: Western Blot: Suggested dilution at 1 µg/mL in 5 % skim milk / PBS buffer, and HRP conjugated anti-Rabbit IgG should be diluted in 1: 50,000 - 100,000 as secondary antibody.
Comment:	Target Species of Antibody: Human
Restrictions:	For Research Use only

## Handling

---

Format:	Lyophilized
Reconstitution:	Distilled water
Concentration:	Lot specific
Buffer:	Lyophilized from PBS with 2 % sucrose
Handling Advice:	Avoid repeat freeze-thaw cycles.
Storage:	4 °C,-20 °C
Storage Comment:	Long term: -20°C, the use of 50% glycerol is recommended if storing aliquots in -20°C for long term use (up to 1 year)  Short term (less than 1 week): 4°C. Avoid freeze-thaw cycles.



**Image 1.**