



[Go to Product page](#)

Datasheet for ABIN6743914
anti-C10ORF96 antibody (AA 179-228)

1 Image

Overview

Quantity:	100 µL
Target:	C10ORF96 (C10orf96)
Binding Specificity:	AA 179-228
Reactivity:	Human, Guinea Pig, Rabbit, Pig
Host:	Rabbit
Clonality:	Polyclonal
Conjugate:	This C10ORF96 antibody is un-conjugated
Application:	Western Blotting (WB)

Product Details

Immunogen:	Synthetic peptide located between aa179-228 of human CCDC172 (P0C7W6, NP_940917). Percent identity by BLAST analysis: Human (100%), Gorilla, Gibbon, Marmoset, Bat (92%), Monkey, Galago, Elephant, Bovine, Rabbit, Pig (85%), Rat (78%). Type of Immunogen: Synthetic peptide
Specificity:	Human C10orf96
Predicted Reactivity:	Percent identity by BLAST analysis: Rabbit, Pig (85%).
Purification:	Immunoaffinity purified

Target Details

Target:	C10ORF96 (C10orf96)
---------	---------------------

Target Details

Alternative Name:	C10orf96 (C10orf96 Products)
Background:	Name/Gene ID: CCDC172 Synonyms: CCDC172, C10orf96, UPF0628 protein C10orf96
Gene ID:	374355
NCBI Accession:	NP_940917
UniProt:	P0C7W6

Application Details

Application Notes:	Approved: WB (0.2 - 1 µg/mL) Usage: Western Blot: Suggested dilution at 1 µg/mL in 5 % skim milk / PBS buffer, and HRP conjugated anti-Rabbit IgG should be diluted in 1: 50,000 - 100,000 as secondary antibody.
Comment:	Target Species of Antibody: Human
Restrictions:	For Research Use only

Handling

Format:	Lyophilized
Reconstitution:	Distilled water
Concentration:	Lot specific
Buffer:	Lyophilized from PBS with 2 % sucrose
Handling Advice:	Avoid repeat freeze-thaw cycles.
Storage:	4 °C,-20 °C
Storage Comment:	Long term: -20°C, the use of 50% glycerol is recommended if storing aliquots in -20°C for long term use (up to 1 year) Short term (less than 1 week): 4°C. Avoid freeze-thaw cycles.

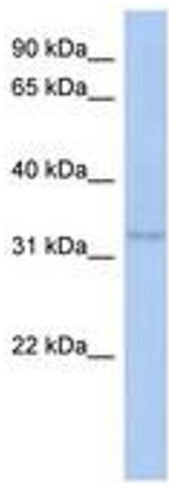


Image 1.