

Datasheet for ABIN6743915  
**anti-Carabin antibody (N-Term)**[Go to Product page](#)

## 1 Image

## Overview

Quantity:	100 µL
Target:	Carabin (TBC1D10C)
Binding Specificity:	N-Term
Reactivity:	Human, Rat, Cow, Monkey
Host:	Rabbit
Clonality:	Polyclonal
Conjugate:	This Carabin antibody is un-conjugated
Application:	Western Blotting (WB)

## Product Details

Immunogen:	Synthetic peptide from N-Terminus of human TBC1D10C (Q8IV04, NP_940919). Percent identity by BLAST analysis: Human, Chimpanzee, Gorilla, Gibbon, Monkey (100%), Elephant, Dog, Horse, Pig (92%), Marmoset, Hamster, Bovine (85%), Rat (78%).  Type of Immunogen: Synthetic peptide
Specificity:	Human TBC1D10C
Predicted Reactivity:	Percent identity by BLAST analysis: Human (100%) Dog, Horse, Pig (92%) Bovine (85%).
Purification:	Immunoaffinity purified

## Target Details

Target:	Carabin (TBC1D10C)
---------	--------------------

## Target Details

Alternative Name:	TBC1D10C / CARABIN ( <a href="#">TBC1D10C Products</a> )
Background:	Name/Gene ID: TBC1D10C  Synonyms: TBC1D10C, Carabin, EPI64C, TBC1 domain family member 10C, TBC1 domain family, member 10C
Gene ID:	374403
NCBI Accession:	<a href="#">NP_940919</a>
UniProt:	<a href="#">Q8IV04</a>

## Application Details

Application Notes:	Approved: WB (0.2 - 1 µg/mL)  Usage: Western Blot: Suggested dilution at 1 µg/mL in 5 % skim milk / PBS buffer, and HRP conjugated anti-Rabbit IgG should be diluted in 1: 50,000 - 100,000 as secondary antibody.
Comment:	Target Species of Antibody: Human
Restrictions:	For Research Use only

## Handling

Format:	Lyophilized
Reconstitution:	Distilled water
Concentration:	Lot specific
Buffer:	Lyophilized from PBS with 2 % sucrose
Handling Advice:	Avoid repeat freeze-thaw cycles.
Storage:	4 °C, -20 °C
Storage Comment:	Long term: -20°C, the use of 50% glycerol is recommended if storing aliquots in -20°C for long term use (up to 1 year)  Short term (less than 1 week): 4°C. Avoid freeze-thaw cycles.

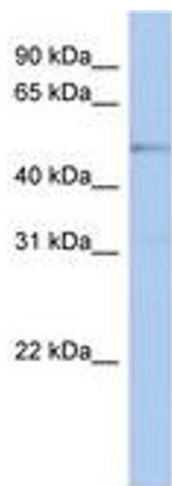


Image 1.