



## Datasheet for ABIN6743917 **anti-TEX9 antibody (AA 287-336)**



[Go to Product page](#)

### 1 Image

#### Overview

Quantity:	100 µL
Target:	TEX9
Binding Specificity:	AA 287-336
Reactivity:	Human, Mouse, Rat, Horse, Zebrafish (Danio rerio), Dog, Guinea Pig, Bat, Pig
Host:	Rabbit
Clonality:	Polyclonal
Conjugate:	This TEX9 antibody is un-conjugated
Application:	Western Blotting (WB)

#### Product Details

Immunogen:	Synthetic peptide located between aa287-336 of human TEX9 (Q8N6V9, NP_940926). Percent identity by BLAST analysis: Human, Chimpanzee, Gorilla, Gibbon, Galago, Mouse, Rat, Elephant, Dog, Bat, Horse, Pig, Guinea pig, Zebrafish (100%), Rabbit, Turkey, Zebra finch, Chicken (92%), Stickleback (91%), Opossum (85%), Platypus (84%).  Type of Immunogen: Synthetic peptide
Specificity:	Human TEX9
Predicted Reactivity:	Percent identity by BLAST analysis: Human, Mouse, Rat, Dog, Horse, Pig, Guinea pig, Zebrafish (100%) Rabbit, Chicken (92%).
Purification:	Immunoaffinity purified

## Target Details

---

Target: TEX9

Alternative Name: TEX9 ([TEX9 Products](#))

Background: Name/Gene ID: TEX9

Synonyms: TEX9, Testis expressed 9, Testis expressed sequence 9

Gene ID: 374618

NCBI Accession: [NP\\_940926](#)

UniProt: [Q8N6V9](#)

## Application Details

---

Application Notes: Approved: WB (0.2 - 1 µg/mL)

Usage: Western Blot: Suggested dilution at 1 µg/mL in 5 % skim milk / PBS buffer, and HRP conjugated anti-Rabbit IgG should be diluted in 1: 50,000 - 100,000 as secondary antibody.

Comment: Target Species of Antibody: Human

Restrictions: For Research Use only

## Handling

---

Format: Lyophilized

Reconstitution: Distilled water

Concentration: Lot specific

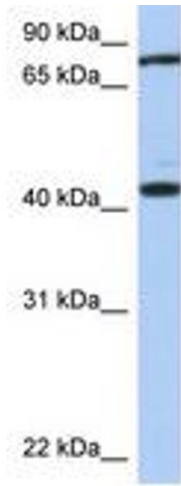
Buffer: Lyophilized from PBS with 2 % sucrose

Handling Advice: Avoid repeat freeze-thaw cycles.

Storage: 4 °C, -20 °C

Storage Comment: Long term: -20°C, the use of 50% glycerol is recommended if storing aliquots in -20°C for long term use (up to 1 year)

Short term (less than 1 week): 4°C. Avoid freeze-thaw cycles.



**Image 1.**