



Datasheet for ABIN6743921
anti-LRRC33 antibody (AA 359-408)



[Go to Product page](#)

1 Image

Overview

Quantity:	100 µL
Target:	LRRC33 (NRROS)
Binding Specificity:	AA 359-408
Reactivity:	Human, Mouse, Rat, Horse, Hamster, Monkey
Host:	Rabbit
Clonality:	Polyclonal
Conjugate:	This LRRC33 antibody is un-conjugated
Application:	Western Blotting (WB)

Product Details

Immunogen:	Synthetic peptide located between aa359-408 of human NRROS (Q86YC3, NP_940967). Percent identity by BLAST analysis: Human, Gorilla, Gibbon, Monkey, Galago, Mouse, Rat, Hamster, Elephant, Panda, Horse (100%), Bovine, Bat, Rabbit (92%). Type of Immunogen: Synthetic peptide
Specificity:	Human LRRC33
Predicted Reactivity:	Percent identity by BLAST analysis: Rat (100%) Rabbit (92%).
Purification:	Immunoaffinity purified

Target Details

Target:	LRRC33 (NRROS)
---------	----------------

Target Details

Alternative Name:	NRROS / LRRC33 (NRROS Products)
Background:	Name/Gene ID: NRROS Synonyms: NRROS, ELLP3030, LRRC33, UNQ3030, GARPL1
Gene ID:	375387
NCBI Accession:	NP_940967
UniProt:	Q86YC3

Application Details

Application Notes:	Approved: WB (0.2 - 1 µg/mL) Usage: Western Blot: Suggested dilution at 1 µg/mL in 5 % skim milk / PBS buffer, and HRP conjugated anti-Rabbit IgG should be diluted in 1: 50,000 - 100,000 as secondary antibody.
Comment:	Target Species of Antibody: Human
Restrictions:	For Research Use only

Handling

Format:	Lyophilized
Reconstitution:	Distilled water
Concentration:	Lot specific
Buffer:	Lyophilized from PBS with 2 % sucrose
Handling Advice:	Avoid repeat freeze-thaw cycles.
Storage:	4 °C,-20 °C
Storage Comment:	Long term: -20°C, the use of 50% glycerol is recommended if storing aliquots in -20°C for long term use (up to 1 year) Short term (less than 1 week): 4°C. Avoid freeze-thaw cycles.

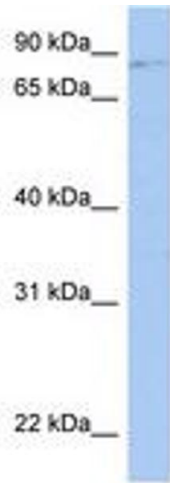


Image 1.