



[Go to Product page](#)

Datasheet for ABIN6743941
anti-PRAME antibody (AA 71-120)

1 Image

Overview

Quantity:	100 µL
Target:	PRAME
Binding Specificity:	AA 71-120
Reactivity:	Human, Horse, Pig, Rabbit
Host:	Rabbit
Clonality:	Polyclonal
Conjugate:	This PRAME antibody is un-conjugated
Application:	Western Blotting (WB)

Product Details

Immunogen:	Synthetic peptide located between aa71-120 of human PRAME (P78395, NP_006106). Percent identity by BLAST analysis: Human, Gibbon, Monkey (100%), Gorilla, Mouse, Rat, Bovine (92%), Marmoset (91%), Hamster, Pig (84%). Type of Immunogen: Synthetic peptide
Specificity:	Human PRAME
Predicted Reactivity:	Percent identity by BLAST analysis: Human (100%) Mouse, Rat (92%) Bovine, Pig (84%).
Purification:	Immunoaffinity purified

Target Details

Target:	PRAME
---------	-------

Target Details

Alternative Name:	PRAME (PRAME Products)
Background:	Name/Gene ID: PRAME Synonyms: PRAME, Cancer/testis antigen 130, CT130, MAPE, Opa-interacting protein 4, Opa-interacting protein OIP4, OIP-4, OIP4
Gene ID:	23532
NCBI Accession:	NP_006106
UniProt:	P78395
Pathways:	Retinoic Acid Receptor Signaling Pathway , Nuclear Hormone Receptor Binding

Application Details

Application Notes:	Approved: WB (0.2 - 1 µg/mL) Usage: Western Blot: Suggested dilution at 1 µg/mL in 5 % skim milk / PBS buffer, and HRP conjugated anti-Rabbit IgG should be diluted in 1: 50,000 - 100,000 as secondary antibody.
Comment:	Target Species of Antibody: Human
Restrictions:	For Research Use only

Handling

Format:	Lyophilized
Reconstitution:	Distilled water
Concentration:	Lot specific
Buffer:	Lyophilized from PBS with 2 % sucrose
Handling Advice:	Avoid repeat freeze-thaw cycles.
Storage:	4 °C, -20 °C
Storage Comment:	Long term: -20°C, the use of 50% glycerol is recommended if storing aliquots in -20°C for long term use (up to 1 year) Short term (less than 1 week): 4°C. Avoid freeze-thaw cycles.

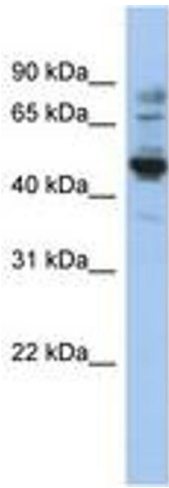


Image 1.