



[Go to Product page](#)

Datasheet for ABIN6743943  
**anti-ZDHHC24 antibody (C-Term)**

1 Image

Overview

Quantity:	100 µL
Target:	ZDHHC24
Binding Specificity:	C-Term
Reactivity:	Human, Dog, Guinea Pig, Horse, Bat
Host:	Rabbit
Clonality:	Polyclonal
Conjugate:	This ZDHHC24 antibody is un-conjugated
Application:	Western Blotting (WB)

Product Details

Immunogen:	Synthetic peptide from C-Terminus of human ZDHHC24 (Q6UX98, NP_997223). Percent identity by BLAST analysis: Human, Chimpanzee, Gorilla, Monkey, Bat, Horse, Guinea pig (100%), Marmoset (92%), Panda, Bovine (91%), Dog, Pig (85%).  Type of Immunogen: Synthetic peptide
Specificity:	Human ZDHHC24
Predicted Reactivity:	Percent identity by BLAST analysis: Bovine (91%) Dog (85%).
Purification:	Immunoaffinity purified

Target Details

Target:	ZDHHC24
---------	---------

## Target Details

---

Alternative Name: ZDHHC24 ([ZDHHC24 Products](#))

Background: Name/Gene ID: ZDHHC24

Synonyms: ZDHHC24, DHHC-24

Gene ID: 254359

NCBI Accession: [NP\\_997223](#)

UniProt: [Q6UX98](#)

## Application Details

---

Application Notes: Approved: WB (0.2 - 1 µg/mL)

Usage: Western Blot: Suggested dilution at 1 µg/mL in 5 % skim milk / PBS buffer, and HRP conjugated anti-Rabbit IgG should be diluted in 1: 50,000 - 100,000 as secondary antibody.

Comment: Target Species of Antibody: Human

Restrictions: For Research Use only

## Handling

---

Format: Lyophilized

Reconstitution: Distilled water

Concentration: Lot specific

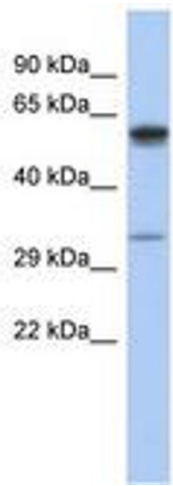
Buffer: Lyophilized from PBS with 2 % sucrose

Handling Advice: Avoid repeat freeze-thaw cycles.

Storage: 4 °C, -20 °C

Storage Comment: Long term: -20°C, the use of 50% glycerol is recommended if storing aliquots in -20°C for long term use (up to 1 year)

Short term (less than 1 week): 4°C. Avoid freeze-thaw cycles.



**Image 1.**