



[Go to Product page](#)

Datasheet for ABIN6743948
anti-GADL1 antibody (AA 215-264)

1 Image

Overview

Quantity:	100 µL
Target:	GADL1
Binding Specificity:	AA 215-264
Reactivity:	Human, Chicken, Monkey, Pig
Host:	Rabbit
Clonality:	Polyclonal
Conjugate:	This GADL1 antibody is un-conjugated
Application:	Western Blotting (WB)

Product Details

Immunogen:	Synthetic peptide located between aa215-264 of human GADL1 (Q6ZQY3, NP_997242). Percent identity by BLAST analysis: Human, Chimpanzee, Gorilla, Gibbon, Monkey, Galago, Marmoset, Pig, Turkey, Zebra finch, Chicken, Platypus (100%), Mouse, Elephant, Bovine, Bat, Rabbit, Horse, Guinea pig, Lizard, Xenopus (92%), Opossum, Stickleback, Zebrafish (85%), Salmon (84%). Type of Immunogen: Synthetic peptide
Specificity:	Human GADL1
Predicted Reactivity:	Percent identity by BLAST analysis: Human, Pig, Chicken (100%) Mouse, Bovine, Rabbit, Horse, Guinea pig (92%).
Purification:	Immunoaffinity purified

Target Details

Target: GADL1

Alternative Name: GADL1 ([GADL1 Products](#))

Background: Name/Gene ID: GADL1

Synonyms: GADL1, Glutamate decarboxylase-like 1

Gene ID: 339896

NCBI Accession: [NP_997242](#)

UniProt: [Q6ZQY3](#)

Application Details

Application Notes: Approved: WB (0.2 - 1 µg/mL)

Usage: Western Blot: Suggested dilution at 1 µg/mL in 5 % skim milk / PBS buffer, and HRP conjugated anti-Rabbit IgG should be diluted in 1: 50,000 - 100,000 as secondary antibody.

Comment: Target Species of Antibody: Human

Restrictions: For Research Use only

Handling

Format: Lyophilized

Reconstitution: Distilled water

Concentration: Lot specific

Buffer: Lyophilized from PBS with 2 % sucrose

Handling Advice: Avoid repeat freeze-thaw cycles.

Storage: 4 °C, -20 °C

Storage Comment: Long term: -20°C, the use of 50% glycerol is recommended if storing aliquots in -20°C for long term use (up to 1 year)

Short term (less than 1 week): 4°C. Avoid freeze-thaw cycles.

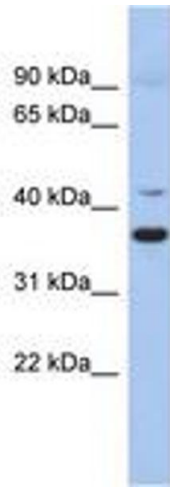


Image 1.