

Datasheet for ABIN6743949
anti-C2orf55 antibody (AA 827-876)



[Go to Product page](#)

1 Image

Overview

Quantity:	100 µL
Target:	C2orf55
Binding Specificity:	AA 827-876
Reactivity:	Human, Horse, Rabbit
Host:	Rabbit
Clonality:	Polyclonal
Conjugate:	This C2orf55 antibody is un-conjugated
Application:	Western Blotting (WB)

Product Details

Immunogen:	Synthetic peptide located between aa827-876 of human KIAA1211L (Q6NV74, NP_997245). Percent identity by BLAST analysis: Human, Chimpanzee, Gorilla (100%), Gibbon (92%), Marmoset (85%). Type of Immunogen: Synthetic peptide
Specificity:	Human C2orf55
Predicted Reactivity:	Percent identity by BLAST analysis:
Purification:	Immunoaffinity purified

Target Details

Target:	C2orf55
---------	---------

Target Details

Alternative Name:	C2orf55 (C2orf55 Products)
Background:	Name/Gene ID: KIAA1211L Synonyms: KIAA1211L, C2orf55, KIAA1211-like
Gene ID:	343990
NCBI Accession:	NP_997245
UniProt:	Q6NV74

Application Details

Application Notes:	Approved: WB (0.2 - 1 µg/mL) Usage: Western Blot: Suggested dilution at 1 µg/mL in 5 % skim milk / PBS buffer, and HRP conjugated anti-Rabbit IgG should be diluted in 1: 50,000 - 100,000 as secondary antibody.
Comment:	Target Species of Antibody: Human
Restrictions:	For Research Use only

Handling

Format:	Lyophilized
Reconstitution:	Distilled water
Concentration:	Lot specific
Buffer:	Lyophilized from PBS with 2 % sucrose
Handling Advice:	Avoid repeat freeze-thaw cycles.
Storage:	4 °C,-20 °C
Storage Comment:	Long term: -20°C, the use of 50% glycerol is recommended if storing aliquots in -20°C for long term use (up to 1 year) Short term (less than 1 week): 4°C. Avoid freeze-thaw cycles.

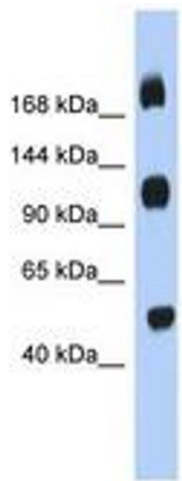


Image 1.