



[Go to Product page](#)

Datasheet for ABIN6743951
anti-CCSER1 antibody (AA 71-120)

1 Image

Overview

Quantity:	100 µL
Target:	CCSER1
Binding Specificity:	AA 71-120
Reactivity:	Human, Mouse, Rat, Bat, Cow, Horse, Monkey
Host:	Rabbit
Clonality:	Polyclonal
Conjugate:	This CCSER1 antibody is un-conjugated
Application:	Western Blotting (WB)

Product Details

Immunogen:	Synthetic peptide located between aa71-120 of human CCSER1 (Q9C0I3-2, NP_997374). Percent identity by BLAST analysis: Human, Chimpanzee, Gorilla, Gibbon, Monkey, Galago, Marmoset, Bovine, Bat, Horse (100%), Elephant, Rabbit, Guinea pig (92%), Mouse, Rat (85%). Type of Immunogen: Synthetic peptide
Specificity:	Human FAM190A
Predicted Reactivity:	Percent identity by BLAST analysis: Human, Bovine (100%) Mouse, Rat (85%).
Purification:	Immunoaffinity purified

Target Details

Target:	CCSER1
---------	--------

Target Details

Alternative Name:	FAM190A (CCSER1 Products)
Background:	Name/Gene ID: CCSER1 Synonyms: CCSER1, KIAA1680, Protein FAM190A, FAM190A
Gene ID:	401145
NCBI Accession:	NP_997374
UniProt:	Q9C0I3

Application Details

Application Notes:	Approved: WB (0.2 - 1 µg/mL) Usage: Western Blot: Suggested dilution at 1 µg/mL in 5 % skim milk / PBS buffer, and HRP conjugated anti-Rabbit IgG should be diluted in 1: 50,000 - 100,000 as secondary antibody.
Comment:	Target Species of Antibody: Human
Restrictions:	For Research Use only

Handling

Format:	Lyophilized
Reconstitution:	Distilled water
Concentration:	Lot specific
Buffer:	Lyophilized from PBS with 2 % sucrose
Handling Advice:	Avoid repeat freeze-thaw cycles.
Storage:	4 °C,-20 °C
Storage Comment:	Long term: -20°C, the use of 50% glycerol is recommended if storing aliquots in -20°C for long term use (up to 1 year) Short term (less than 1 week): 4°C. Avoid freeze-thaw cycles.

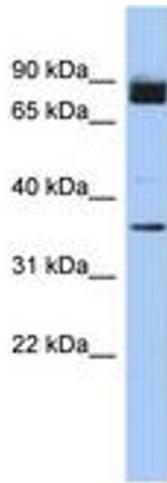


Image 1.