

Datasheet for ABIN6743953  
**anti-LYSMD1 antibody (AA 35-84)**



[Go to Product page](#)

1 Image

## Overview

Quantity:	100 µL
Target:	LYSMD1
Binding Specificity:	AA 35-84
Reactivity:	Human, Mouse, Rat, Rabbit, Hamster
Host:	Rabbit
Clonality:	Polyclonal
Conjugate:	This LYSMD1 antibody is un-conjugated
Application:	Western Blotting (WB)

## Product Details

Immunogen:	Synthetic peptide located between aa35-84 of human LYSMD1 (Q96S90, NP_997716). Percent identity by BLAST analysis: Human, Chimpanzee, Gorilla, Gibbon, Baboon, Monkey, Galago, Mouse, Rat, Hamster, Rabbit, Armadillo (100%), Marmoset, Elephant, Panda, Dog, Bovine, Bat, Horse, Pig (92%), Opossum, Guinea pig (85%).  Type of Immunogen: Synthetic peptide
Specificity:	Human LYSMD1
Predicted Reactivity:	Percent identity by BLAST analysis: Mouse, Rabbit (100%) Dog, Pig (92%).
Purification:	Immunoaffinity purified

## Target Details

---

Target:	LYSMD1
Alternative Name:	LYSMD1 ( <a href="#">LYSMD1 Products</a> )
Background:	Name/Gene ID: LYSMD1  Synonyms: LYSMD1, RP11-68118.5, SB145
Gene ID:	388695
NCBI Accession:	<a href="#">NP_997716</a>
UniProt:	<a href="#">Q96S90</a>

## Application Details

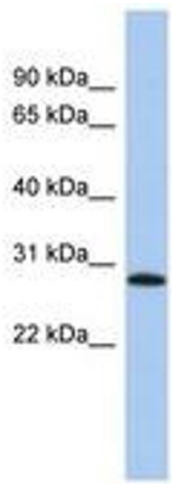
---

Application Notes:	Approved: WB (0.2 - 1 µg/mL)  Usage: Western Blot: Suggested dilution at 1 µg/mL in 5 % skim milk / PBS buffer, and HRP conjugated anti-Rabbit IgG should be diluted in 1: 50,000 - 100,000 as secondary antibody.
Comment:	Target Species of Antibody: Human
Restrictions:	For Research Use only

## Handling

---

Format:	Lyophilized
Reconstitution:	Distilled water
Concentration:	Lot specific
Buffer:	Lyophilized from PBS with 2 % sucrose
Handling Advice:	Avoid repeat freeze-thaw cycles.
Storage:	4 °C, -20 °C
Storage Comment:	Long term: -20°C, the use of 50% glycerol is recommended if storing aliquots in -20°C for long term use (up to 1 year)  Short term (less than 1 week): 4°C. Avoid freeze-thaw cycles.



**Image 1.**