



[Go to Product page](#)

Datasheet for ABIN6743957

## anti-RSPH10B antibody (AA 287-336)

### 1 Image

#### Overview

Quantity:	100 µL
Target:	RSPH10B
Binding Specificity:	AA 287-336
Reactivity:	Human, Mouse
Host:	Rabbit
Clonality:	Polyclonal
Conjugate:	This RSPH10B antibody is un-conjugated
Application:	Western Blotting (WB)

#### Product Details

Immunogen:	Synthetic peptide located between aa287-336 of human RSPH10B (B2RC85, NP_775836). Percent identity by BLAST analysis: Human, Chimpanzee (100%), Panda, Bovine, Guinea pig (92%), Mouse, Rat (85%).  Type of Immunogen: Synthetic peptide
Specificity:	Human RSPH10B
Predicted Reactivity:	Percent identity by BLAST analysis: Human (100%) Bovine (92%) Mouse (85%).
Purification:	Immunoaffinity purified

#### Target Details

Target:	RSPH10B
---------	---------

## Target Details

---

Alternative Name:	RSPH10B ( <a href="#">RSPH10B Products</a> )
Background:	Name/Gene ID: RSPH10B  Synonyms: RSPH10B, Radial spoke head 10 homolog B
Gene ID:	222967
NCBI Accession:	<a href="#">NP_775836</a>
UniProt:	<a href="#">P0C881</a>

## Application Details

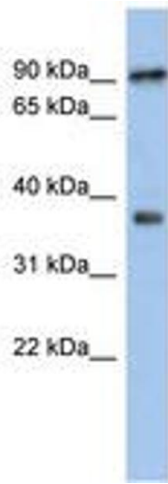
---

Application Notes:	Approved: WB (0.2 - 1 µg/mL)  Usage: Western Blot: Suggested dilution at 1 µg/mL in 5 % skim milk / PBS buffer, and HRP conjugated anti-Rabbit IgG should be diluted in 1: 50,000 - 100,000 as secondary antibody.
Comment:	Target Species of Antibody: Human
Restrictions:	For Research Use only

## Handling

---

Format:	Lyophilized
Reconstitution:	Distilled water
Concentration:	Lot specific
Buffer:	Lyophilized from PBS with 2 % sucrose
Handling Advice:	Avoid repeat freeze-thaw cycles.
Storage:	4 °C,-20 °C
Storage Comment:	Long term: -20°C, the use of 50% glycerol is recommended if storing aliquots in -20°C for long term use (up to 1 year)  Short term (less than 1 week): 4°C. Avoid freeze-thaw cycles.



**Image 1.**