

Datasheet for ABIN6743958  
**anti-ALOX15 antibody (AA 539-588)**



[Go to Product page](#)

1 Image

## Overview

Quantity:	100 µL
Target:	ALOX15
Binding Specificity:	AA 539-588
Reactivity:	Human, Rat, Mouse, Monkey, Pig, Rabbit
Host:	Rabbit
Clonality:	Polyclonal
Conjugate:	This ALOX15 antibody is un-conjugated
Application:	Western Blotting (WB)

## Product Details

Immunogen:	Synthetic peptide located between aa539-588 of human ALOX15 (P16050, NP_001131). Percent identity by BLAST analysis: Human, Chimpanzee, Gorilla, Orangutan, Gibbon, Monkey, Galago, Rabbit, Pig (100%), Elephant, Dog, Bovine (92%), Mouse, Rat, Opossum (84%).  Type of Immunogen: Synthetic peptide
Specificity:	Human ALOX15 / 15 Lipoxygenase 1
Predicted Reactivity:	Percent identity by BLAST analysis: Human, Pig (100%) Dog (92%) Mouse, Rat (84%).
Purification:	Immunoaffinity purified

## Target Details

Target:	ALOX15
---------	--------

## Target Details

---

Alternative Name:	ALOX15 / 15-Lipoxygenase ( <a href="#">ALOX15 Products</a> )
Background:	Name/Gene ID: ALOX15  Synonyms: ALOX15, 15-lipoxygenase, 15-LOX, 15-lipooxygenase-1, 15-LO-1, 15LOX-1, 15-LOX-1, LOG15, Arachidonate 15-lipoxygenase
Gene ID:	246
NCBI Accession:	<a href="#">NP_001131</a>
UniProt:	<a href="#">P16050</a>
Pathways:	<a href="#">Regulation of Actin Filament Polymerization</a>

## Application Details

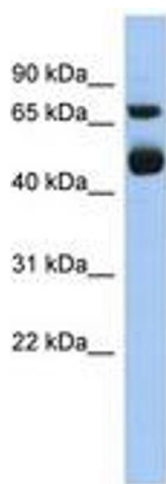
---

Application Notes:	Approved: WB (0.2 - 1 µg/mL)  Usage: Western Blot: Suggested dilution at 1 µg/mL in 5 % skim milk / PBS buffer, and HRP conjugated anti-Rabbit IgG should be diluted in 1: 50,000 - 100,000 as secondary antibody.
Comment:	Target Species of Antibody: Human
Restrictions:	For Research Use only

## Handling

---

Format:	Lyophilized
Reconstitution:	Distilled water
Concentration:	Lot specific
Buffer:	Lyophilized from PBS with 2 % sucrose
Handling Advice:	Avoid repeat freeze-thaw cycles.
Storage:	4 °C, -20 °C
Storage Comment:	Long term: -20°C, the use of 50% glycerol is recommended if storing aliquots in -20°C for long term use (up to 1 year)  Short term (less than 1 week): 4°C. Avoid freeze-thaw cycles.



**Image 1.**