



[Go to Product page](#)

Datasheet for ABIN6743962  
**anti-ASPA antibody (AA 71-120)**

1 Image

Overview

Quantity:	100 µL
Target:	ASPA
Binding Specificity:	AA 71-120
Reactivity:	Human, Mouse, Rat, Horse, Rabbit, Cow, Dog, Guinea Pig, Monkey, Pig, Bat
Host:	Rabbit
Clonality:	Polyclonal
Conjugate:	This ASPA antibody is un-conjugated
Application:	Western Blotting (WB)

Product Details

Immunogen:	Synthetic peptide located between aa71-120 of human ASPA (P45381, NP_000040). Percent identity by BLAST analysis: Human, Chimpanzee, Gorilla, Orangutan, Gibbon, Monkey, Galago, Mouse, Rat, Dog, Bovine, Bat, Rabbit, Horse, Pig, Guinea pig (100%), Elephant, Panda, Turkey, Zebra finch, Chicken (92%), Salmon, Zebrafish (90%), Platypus (85%).  Type of Immunogen: Synthetic peptide
Specificity:	Human ASPA
Predicted Reactivity:	Percent identity by BLAST analysis: Human, Mouse, Rat, Dog, Bovine, Horse, Guinea pig (100%) Chicken (92%).
Purification:	Immunoaffinity purified

## Target Details

---

Target: ASPA

Alternative Name: ASPA ([ASPA Products](#))

Background: Name/Gene ID: ASPA

Synonyms: ASPA, ACY2, Aminoacylase-2, ACY-2, Aspartoacylase, Aminoacylase 2, ASP

Gene ID: 443

NCBI Accession: [NP\\_000040](#)

## Application Details

---

Application Notes: Approved: WB (0.2 - 1 µg/mL)

Usage: Western Blot: Suggested dilution at 1 µg/mL in 5 % skim milk / PBS buffer, and HRP conjugated anti-Rabbit IgG should be diluted in 1: 50,000 - 100,000 as secondary antibody.

Comment: Target Species of Antibody: Human

Restrictions: For Research Use only

## Handling

---

Format: Lyophilized

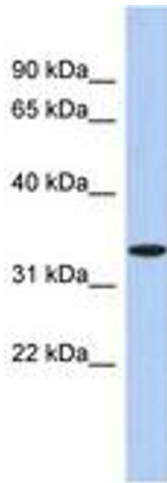
Reconstitution: Distilled water

Concentration: Lot specific

Buffer: Lyophilized from PBS with 2 % sucrose

Storage: 4 °C, -20 °C

Storage Comment: Long term: -20°C, the use of 50% glycerol is recommended if storing aliquots in -20°C for long term use (up to 1 year)  
Short term (less than 1 week): 4°C. Avoid freeze-thaw cycles.



**Image 1.**