



[Go to Product page](#)

Datasheet for ABIN6743963
anti-ASPA antibody (AA 143-192)

1 Image

Overview

Quantity:	100 µL
Target:	ASPA
Binding Specificity:	AA 143-192
Reactivity:	Human, Mouse, Rat, Horse, Rabbit, Cow, Dog, Guinea Pig, Monkey, Pig, Bat
Host:	Rabbit
Clonality:	Polyclonal
Conjugate:	This ASPA antibody is un-conjugated
Application:	Western Blotting (WB)

Product Details

Immunogen:	Synthetic peptide located between aa143-192 of human ASPA (P45381, NP_000040). Percent identity by BLAST analysis: Human, Chimpanzee, Gorilla, Orangutan, Gibbon, Monkey, Mouse, Rat, Elephant, Panda, Dog, Bovine, Bat, Rabbit, Horse, Pig, Guinea pig, Zebra finch (100%), Turkey, Chicken, Xenopus (92%), Galago, Platypus (85%). Type of Immunogen: Synthetic peptide
Specificity:	Human ASPA
Predicted Reactivity:	Percent identity by BLAST analysis: Human, Mouse, Rat, Dog, Bovine, Horse, Guinea pig (100%) Chicken (92%).
Purification:	Immunoaffinity purified

Target Details

Target: ASPA

Alternative Name: ASPA ([ASPA Products](#))

Background: Name/Gene ID: ASPA

Synonyms: ASPA, ACY2, Aminoacylase-2, ACY-2, Aspartoacylase, Aminoacylase 2, ASP

Gene ID: 443

NCBI Accession: [NP_000040](#)

UniProt: [P45381](#)

Application Details

Application Notes: Approved: WB (0.2 - 1 µg/mL)

Usage: Western Blot: Suggested dilution at 1 µg/mL in 5 % skim milk / PBS buffer, and HRP conjugated anti-Rabbit IgG should be diluted in 1: 50,000 - 100,000 as secondary antibody.

Comment: Target Species of Antibody: Human

Restrictions: For Research Use only

Handling

Format: Lyophilized

Reconstitution: Distilled water

Concentration: Lot specific

Buffer: Lyophilized from PBS with 2 % sucrose

Handling Advice: Avoid repeat freeze-thaw cycles.

Storage: 4 °C, -20 °C

Storage Comment: Long term: -20°C, the use of 50% glycerol is recommended if storing aliquots in -20°C for long term use (up to 1 year)

Short term (less than 1 week): 4°C. Avoid freeze-thaw cycles.

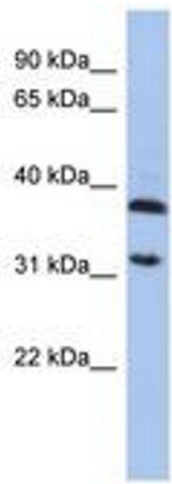


Image 1.